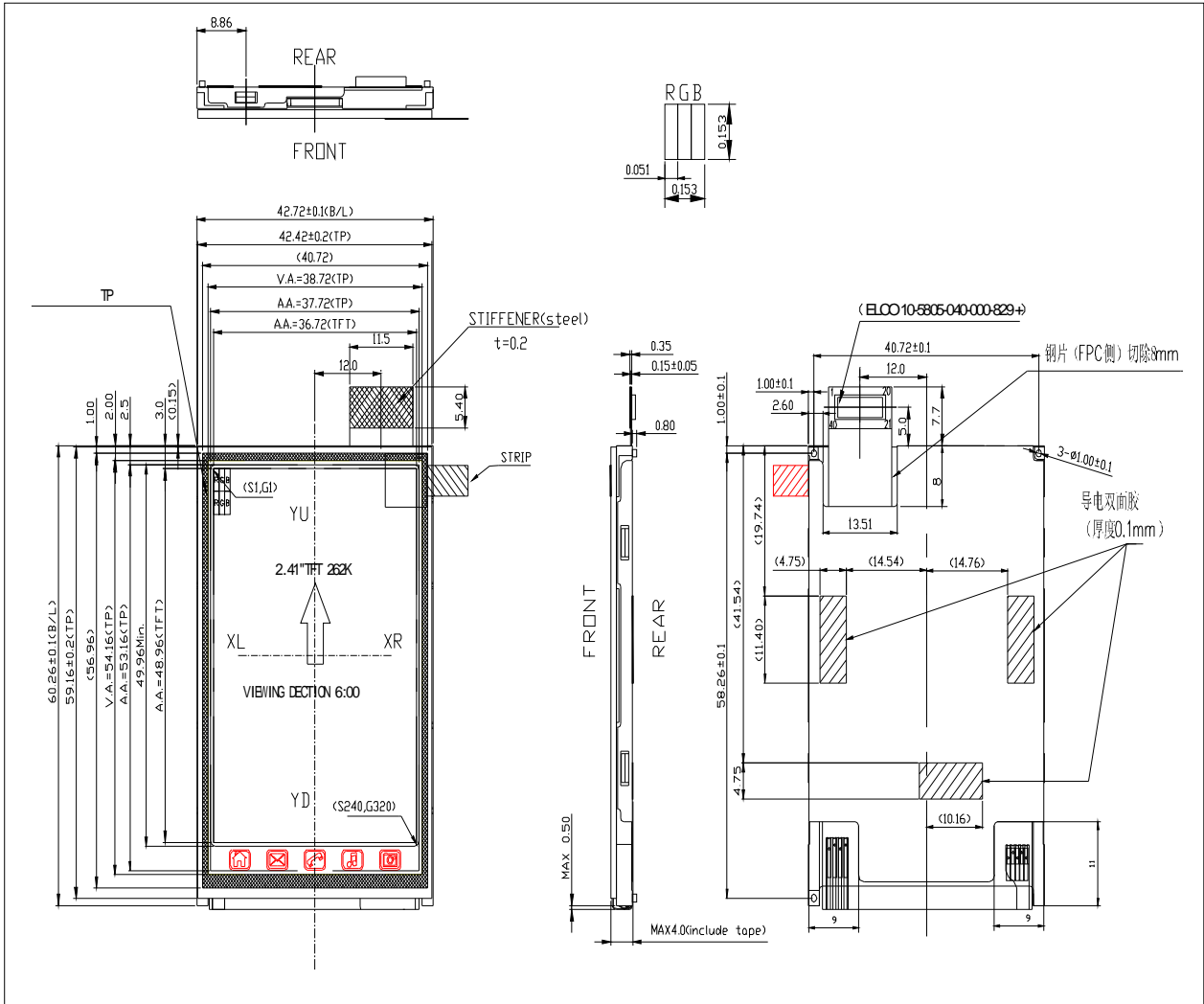


## 1.0 DIMENSIONAL DRAWING



Pin No	Symbol	Description
1	GND	Ground
2	XL	touch panel output pin. (Touch screen X coordinate left)
3	YU	touch panel output pin. (Touch screen Y coordinate up)
4	XR	touch panel output pin. (Touch screen X coordinate right)
5	YD	touch panel output pin. (Touch screen Y coordinate down)
6-7	GND	Ground
8-9	VDD	Power supply: +2.8V
10	/CS	L: Chip Selected H: Chip Unselected
11	RS	L: Command; H: display data
12	/WR	180 system: Serves as a write signal and writes data at the rising edge
13	/RD	180 system: Serves as a read signal and reads data at the low level
14-19	DB0-DB5	Data Bus
20-21	GND	Ground
22-31	DB15-DB6	Data Bus
32	/RES	L: initialization is executed
33	GND	Ground
34	LED+	Backlight LED anode
35	GND	Ground
36	LED4-	Backlight LED cathode (K4)
37	LED3-	Backlight LED cathode (K3)
38	LED2-	Backlight LED cathode (K2)
39	LED1-	Backlight LED cathode (K1)
40	LCM_ID	LCM ID

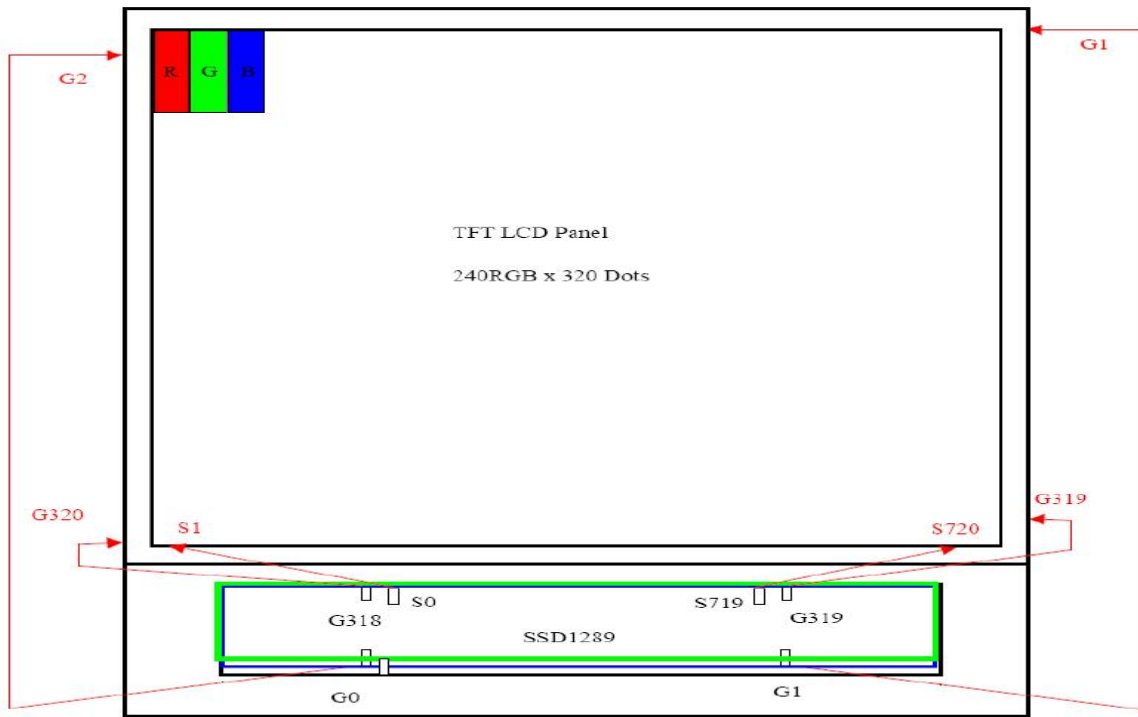
LCD PIN	IC PIN
G1.G3...G319	G1.G3...G319
G2.G4...G318	G0.G2...G320
S1-S720	S0-S719

### NOTE:

1. DISPLAY TYPE: 262K COLORS-TFT-NEGATIVE-TRANSMISSIVE
2. VIEWING DIR.: 6:00
3. DRIVE METHOD: 1/320DUTY, VDD=2.8±0.2V
4. OP. TEMP.: -20°C~60°C
5. ST. TEMP.: -30°C~70°C
6. DRIVE IC: SSD1289(COG, SOLOMON)
7. BACKLIGHT-LED COLOR-WHITE, I<sub>f</sub>=72mA, V<sub>f</sub>=3.2±0.2V  
LUMINANCE>2800CD/m<sup>2</sup> X=0.25-0.29, Y=0.25-0.29
8. 8080 Series MPU, 16-bit
9. ROHS

10. LCD DRAWING NO.: JY06B80

## 2.0 BLOCK DIAGRAM



## 3.0 MECHANICAL SPECIFICATIONS

ITEM	CONTENT	UNIT
DOTS NUMBER	240(RGB)x320	DOTS
MODULE DIMENSION	42.72(w)*68.46(h)*4.0(t) Max	mm
ACTIVE AREA	36.72(w)*48.96(h)	mm
DOT SIZE	0.153(w)*0.153(h)	mm

## 4.0 ELECTRO-OPTICAL CHARACTERISTICS

Item	Symbol	Conditions	Specifications			Unit	Note	
			Min.	Typ.	Max.			
Transmittance	T%	Viewing normal angle $\theta_x = \theta_y = 0^\circ$		4.7		%	All left side data are based on CMO's following condition – Type 767 NTSC: 60% LC:5066 Light : C light (Machine:BM5A) Normal Polarizer Without DBEF	
Contrast Ratio	CR		150	250	-	-		
Response Time	$T_R$		NA	10	20	ms		
	$T_F$		NA	20	30	ms		
Chromaticity	Red		$X_R$	0.603	0.633	0.663		
			$Y_R$	0.299	0.329	0.359		
	Green		$X_G$	0.264	0.294	0.324		
			$Y_G$	0.546	0.576	0.606		
	Blue		$X_B$	0.103	0.133	0.163		
			$Y_B$	0.092	0.122	0.152		
White	$X_W$	0.278	0.308	0.338				
	$Y_W$	0.316	0.346	0.376				
Viewing Angle	Hor.	$\theta_{x+}$		45	-	deg.		
		$\theta_{x-}$		45	-			
	Ver.	$\theta_{y+}$		35	-			
		$\theta_{y-}$		15	-			
		Center CR $\geq$ 10						

## 5.0 ELECTRONIC CHARACTERISTICS

ITEM	SYMBOL	STANDARD VALUE		UNIT
		MIN	MAX	
Logic supply voltage	$V_{DD1}$	-0.3	+4.0	V
Operating Temperature	Top	-20	+60	°C
Storage Temperature	Tst	-30	+70	°C

## 6.0 PINS DESCRIPTION

Pin No.	Symbol	Description
1	GND	Ground
2	XL	touch panel output pin. (Touch screen X coordinate left)
3	YU	touch panel output pin. (Touch screen Y coordinate up)
4	XR	touch panel output pin. (Touch screen X coordinate right)
5	YD	touch panel output pin. (Touch screen Y coordinate down)
6-7	GND	Ground
8-9	VDD	Power supply: +2.8V
10	/CS	L: Chip Selected H: Chip Unselected
11	RS	L: Command; H: display data
12	/WR	180 system: Serves as a write signal and writes data at the rising edge
13	/RD	180 system: Serves as a read signal and reads data at the low level
14-19	DB0-DB5	Data Bus
20-21	GND	Ground
22-31	DB15-DB6	Data Bus
32	/RES	L: initialization is executed
33	GND	Ground
34	LED+	Backlight LED anode
35	GND	Ground
36	LED4-	Backlight LED cathode (K4)
37	LED3-	Backlight LED cathode (K3)
38	LED2-	Backlight LED cathode (K2)
39	LED1-	Backlight LED cathode (K1)
40	LCM_ID	LCM ID

### Remark

1. LCD option: STN, FSTN .
2. Customized module.
3. Backlight option: EL backlight feature, other specs not available on catalog is under request.