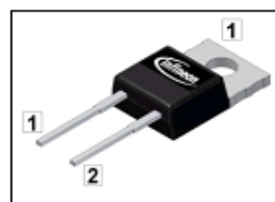


thinQ!™ SiC Schottky Diode
Features

- Revolutionary semiconductor material - Silicon Carbide
- Switching behavior benchmark
- No reverse recovery/ No forward recovery
- Temperature independent switching behavior
- High surge current capability
- Pb-free lead plating; RoHS compliant
- Qualified according to JEDEC¹⁾ for target applications
- Optimized for high temperature operation
- Lowest Figure of Merit Q_C/I_F

Product Summary

V_{DC}	1200	V
Q_C	36	nC
$I_F; T_C < 130\text{ °C}$	10	A

PG-TO220-2

thinQ!™ Diode designed for fast switching applications like:

- SMPS e.g.; CCM PFC
- Motor Drives; Solar Applications; UPS

Type	Package	Marking	Pin 1	Pin 2
IDH10S120	PG-TO220-2	D10S120	C	A

Maximum ratings

Parameter	Symbol	Conditions	Value	Unit
Continuous forward current	I_F	$T_C < 130\text{ °C}$	10	A
Surge non-repetitive forward current, sine halfwave	$I_{F,SM}$	$T_C = 25\text{ °C}, t_p = 10\text{ ms}$	58	
		$T_C = 150\text{ °C}, t_p = 10\text{ ms}$	50	
Non-repetitive peak forward current	$I_{F,max}$	$T_C = 25\text{ °C}, t_p = 10\text{ }\mu\text{s}$	250	
i^2t value	$\int i^2 dt$	$T_C = 25\text{ °C}, t_p = 10\text{ ms}$	16	A ² s
		$T_C = 150\text{ °C}, t_p = 10\text{ ms}$	12	
Repetitive peak reverse voltage	V_{RRM}	$T_j = 25\text{ °C}$	1200	V
Diode dv/dt ruggedness	dv/dt	$V_R = 0 \dots 480\text{ V}$	50	V/ns
Power dissipation	P_{tot}	$T_C = 25\text{ °C}$	136.4	W
Operating and storage temperature	T_j, T_{stg}		-55 ... 175	°C
Mounting torque		M3 and M3.5 screws	60	Ncm

Parameter	Symbol	Conditions	Values			Unit
			min.	typ.	max.	

Thermal characteristics

Thermal resistance, junction - case	R_{thJC}		-	-	1.1	K/W
Thermal resistance, junction - ambient	R_{thJA}	Thermal resistance, junction- ambient, leaded	-	-	62	
Soldering temperature, wavesoldering only allowed at leads	T_{sold}	1.6 mm (0.063 in.) from case for 10 s	-	-	260	°C

Electrical characteristics, at $T_j=25\text{ °C}$, unless otherwise specified
Static characteristics

Diode forward voltage	V_F	$I_F=10\text{ A}$, $T_j=25\text{ °C}$	-	1.65	1.8	V
		$I_F=10\text{ A}$, $T_j=150\text{ °C}$	-	2.55	-	
Reverse current	I_R	$V_R=1200\text{ V}$, $T_j=25\text{ °C}$	-	10	240	μA
		$V_R=1200\text{ V}$, $T_j=150\text{ °C}$	-	40	1000	

AC characteristics

Total capacitive charge	Q_c	$V_R=400\text{ V}$, $I_F \leq I_{F,max}$, $di_F/dt=200\text{ A}/\mu\text{s}$,	-	36	-	nC
Switching time ²⁾	t_c	$T_j=150\text{ °C}$	-	-	<10	ns
Total capacitance	C	$V_R=1\text{ V}$, $f=1\text{ MHz}$	-	500	-	pF
		$V_R=300\text{ V}$, $f=1\text{ MHz}$	-	40	-	
		$V_R=600\text{ V}$, $f=1\text{ MHz}$	-	36	-	

¹⁾ J-STD20 and JESD22

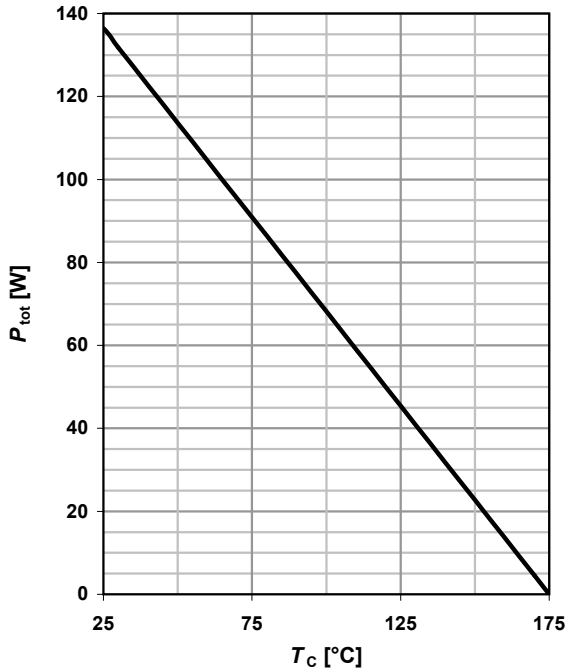
²⁾ t_c is the time constant for the capacitive displacement current waveform (independent from T_j , I_{LOAD} and di/dt), different from t_{rr} which is dependent on T_j , I_{LOAD} and di/dt . No reverse recovery time constant t_{rr} due to absence of minority carrier inje

³⁾ Under worst case Z_{th} conditions.

⁴⁾ Only capacitive charge occurring, guaranteed by design

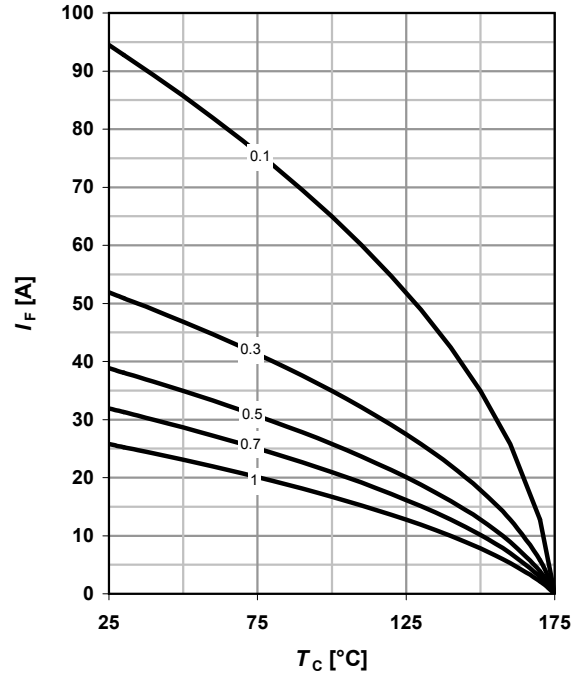
1 Power dissipation

$$P_{tot} = f(T_C)$$



2 Diode forward current

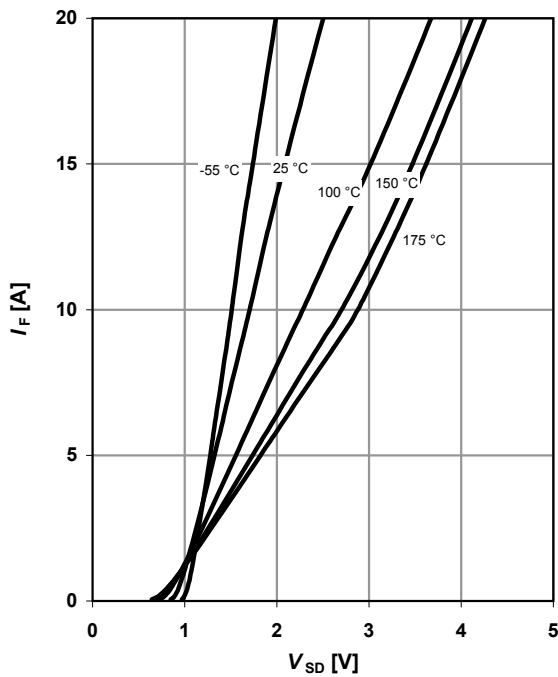
$$I_F = f(T_C)^3; T_j \leq 175 \text{ °C}; \text{ parameter: } D = t_p/T$$



3 Typ. forward characteristic

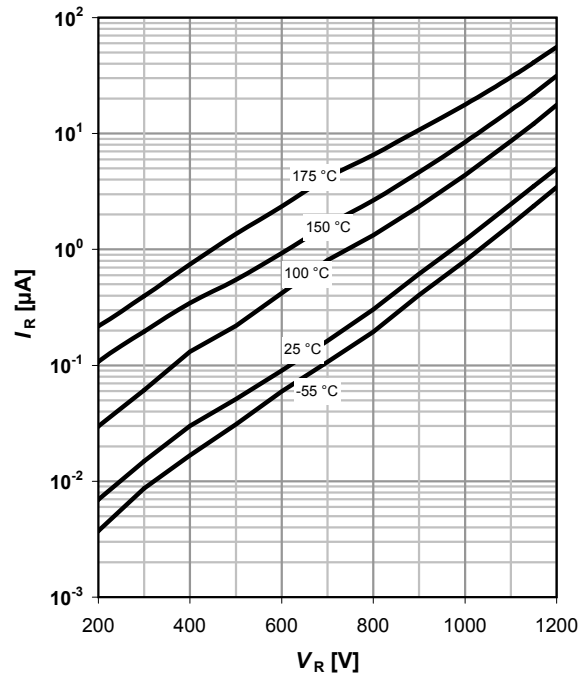
$$I_F = f(V_F); t_p = 400 \text{ }\mu\text{s}$$

parameter: T_j



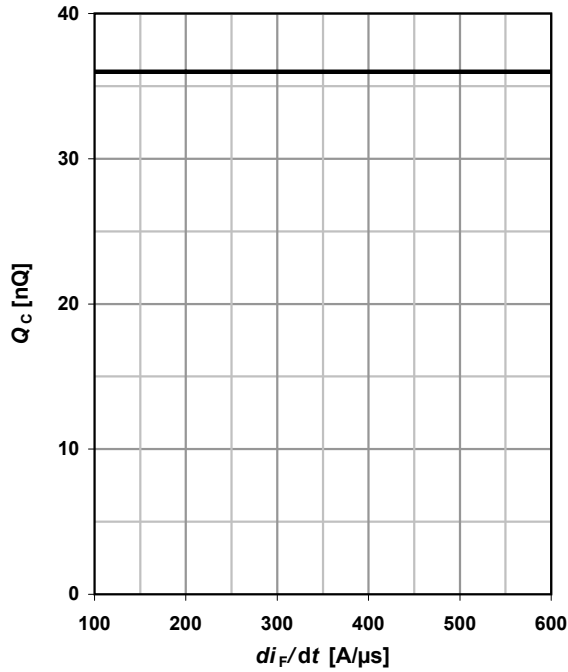
4 Typ. Reverse current vs. reverse voltage

$$E_C = f(V_R)$$



5 Typ. capacitance charge vs. current slope

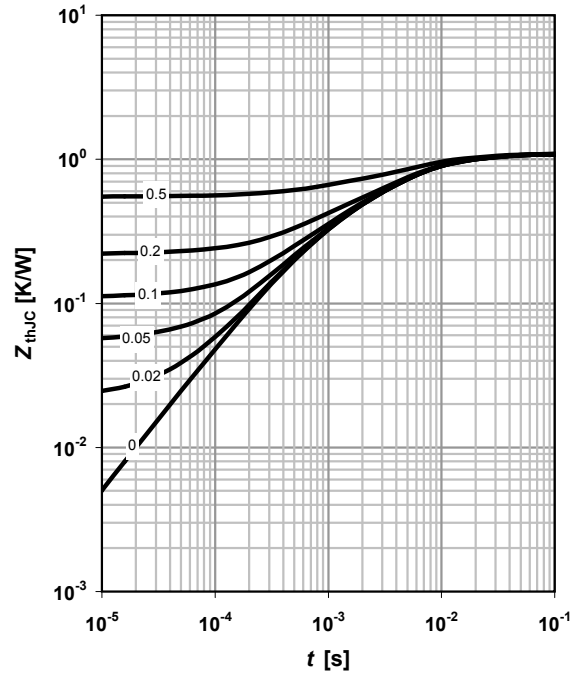
$$Q_C = f(di_F/dt)^2; T_J = 150\text{ }^\circ\text{C}$$



6 Transient thermal impedance

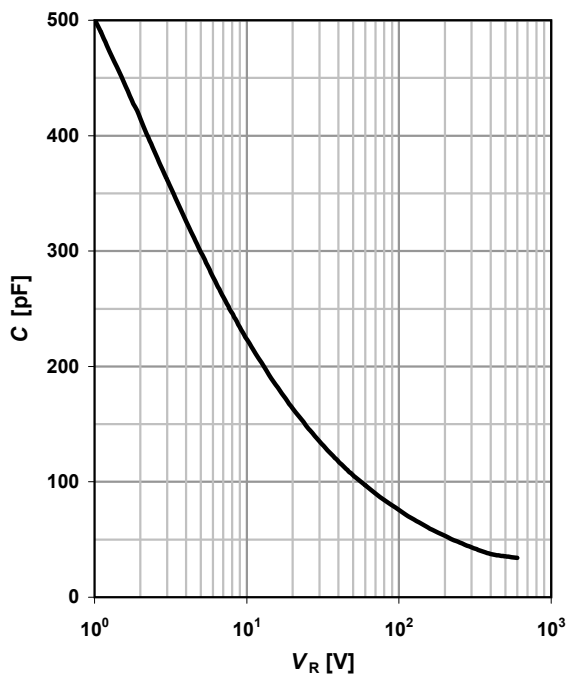
$$Z_{thJC} = f(t_p)$$

parameter: $D = t_p/T$



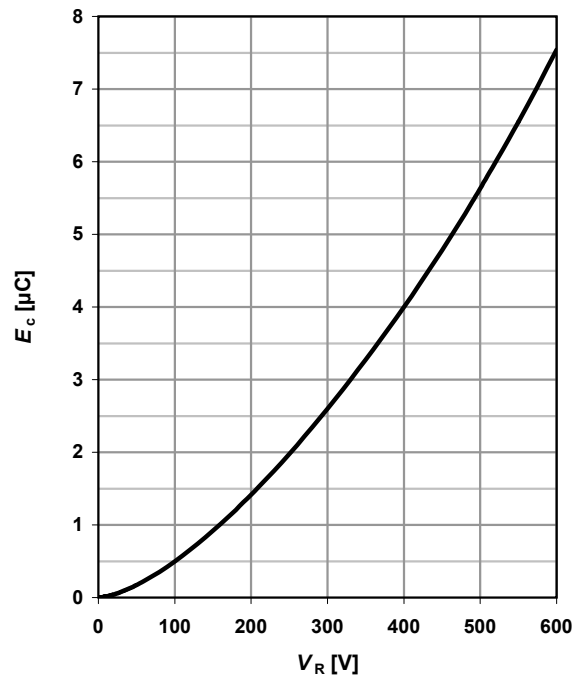
7 Typ. capacitance vs. reverse voltage

$$C = f(V_R); T_C = 25\text{ }^\circ\text{C}, f = 1\text{ MHz}$$

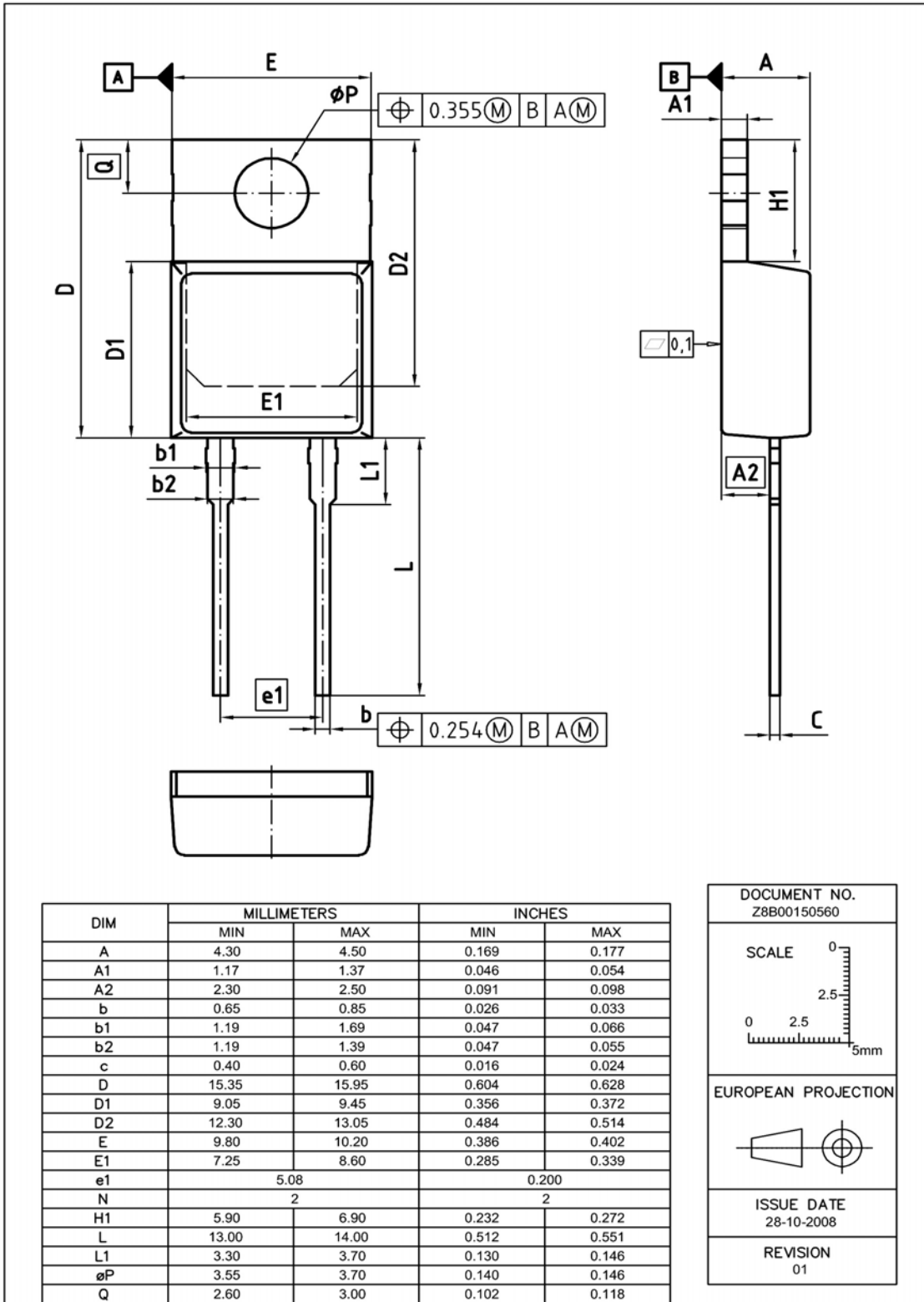


8 Typ. C stored energy

$$E_C = f(V_R)$$



PG-TO220-2: Outline



Dimensions in mm

Published by
Infineon Technologies AG
81726 Munich, Germany
© 2008 Infineon Technologies AG
All Rights Reserved.

Legal Disclaimer

The information given in this document shall in no event be regarded as a guarantee of conditions or characteristics. With respect to any examples or hints given herein, any typical values stated herein and/or any information regarding the application of the device, Infineon Technologies hereby disclaims any and all warranties and liabilities of any kind, including without limitation, warranties of non-infringement of intellectual property rights of any third party.

Information

For further information on technology, delivery terms and conditions and prices, please [contact the nearest Infineon Technologies Office \(www.infineon.com\)](http://www.infineon.com).

Warnings

Due to technical requirements, components may contain dangerous substances. For information on the types in question, please contact the nearest Infineon Technologies Office. Infineon Technologies components may be used in life-support devices or systems only with the express written approval of Infineon Technologies, if a failure of such components can reasonably be expected to cause the failure of that life-support device or system or to affect the safety or effectiveness of that device or system. Life support devices or systems are intended to be implanted in the human body or to support and/or maintain and sustain and/or protect human life. If they fail, it is reasonable to assume that the health of the user or other persons may be endangered.