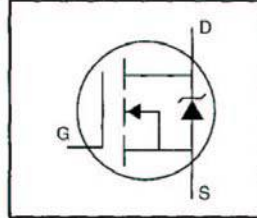


HEXFET® Power MOSFET

- Dynamic dv/dt Rating
- Isolated Central Mounting Hole
- 175°C Operating Temperature
- Ease of Paralleling
- Simple Drive Requirements

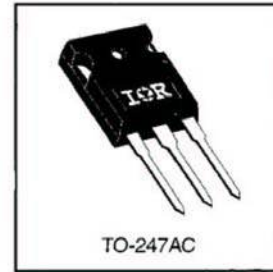


$V_{DSS} = 60V$   
 $R_{DS(on)} = 0.018\Omega$   
 $I_D = 70^*A$

**Description**

Third Generation HEXFETs from International Rectifier provide the designer with the best combination of fast switching, ruggedized device design, low on-resistance and cost-effectiveness.

The TO-247 package is preferred for commercial-industrial applications where higher power levels preclude the use of TO-220 devices. The TO-247 is similar but superior to the earlier TO-218 package because of its isolated mounting hole. It also provides greater creepage distance between pins to meet the requirements of most safety specifications.



DATA SHEETS

**Absolute Maximum Ratings**

	Parameter	Max.	Units	
$I_D @ T_C = 25^\circ C$	Continuous Drain Current, $V_{GS} @ 10 V$	70*	A	
$I_D @ T_C = 100^\circ C$	Continuous Drain Current, $V_{GS} @ 10 V$	52		
$I_{DM}$	Pulsed Drain Current ①	290		
$P_D @ T_C = 25^\circ C$	Power Dissipation	190	W	
	Linear Derating Factor	1.3	W/°C	
$V_{GS}$	Gate-to-Source Voltage	$\pm 20$	V	
$E_{AS}$	Single Pulse Avalanche Energy ②	200	mJ	
dv/dt	Peak Diode Recovery dv/dt ③	4.5	V/ns	
$T_J$	Operating Junction and Storage Temperature Range	-55 to +175	°C	
$T_{STG}$		Soldering Temperature, for 10 seconds		300 (1.6mm from case)
		Mounting Torque, 6-32 or M3 screw		10 lbf•in (1.1 N•m)

**Thermal Resistance**

	Parameter	Min.	Typ.	Max.	Units
$R_{\theta JC}$	Junction-to-Case	—	—	0.80	°C/W
$R_{\theta CS}$	Case-to-Sink, Flat, Greased Surface	—	0.24	—	
$R_{\theta JA}$	Junction-to-Ambient	—	—	40	

**Electrical Characteristics @ T<sub>J</sub> = 25°C (unless otherwise specified)**

Parameter	Min.	Typ.	Max.	Units	Test Conditions
V <sub>(BR)DSS</sub>	60	—	—	V	V <sub>GS</sub> =0V, I <sub>D</sub> =250μA
ΔV <sub>(BR)DSS</sub> /ΔT <sub>J</sub>	—	0.060	—	V/°C	Reference to 25°C, I <sub>D</sub> =1mA
R <sub>DS(on)</sub>	—	—	0.018	Ω	V <sub>GS</sub> =10V, I <sub>D</sub> =44A ④
V <sub>GS(th)</sub>	2.0	—	4.0	V	V <sub>DS</sub> =V <sub>GS</sub> , I <sub>D</sub> =250μA
g <sub>fs</sub>	20	—	—	S	V <sub>DS</sub> =25V, I <sub>D</sub> =44A ④
I <sub>DSS</sub>	—	—	25	μA	V <sub>DS</sub> =60V, V <sub>GS</sub> =0V
	—	—	250	μA	V <sub>DS</sub> =48V, V <sub>GS</sub> =0V, T <sub>J</sub> =150°C
I <sub>GSS</sub>	—	—	100	nA	V <sub>GS</sub> =20V
	—	—	-100	nA	V <sub>GS</sub> =-20V
Q <sub>g</sub>	—	—	110	nC	I <sub>D</sub> =72A
Q <sub>gs</sub>	—	—	29	nC	V <sub>DS</sub> =48V
Q <sub>gd</sub>	—	—	38	nC	V <sub>GS</sub> =10V See Fig. 6 and 13 ④
t <sub>d(on)</sub>	—	8.1	—	ns	V <sub>DD</sub> =30V
t <sub>r</sub>	—	250	—	ns	I <sub>D</sub> =72A
t <sub>d(off)</sub>	—	210	—	ns	R <sub>G</sub> =9.1Ω
t <sub>f</sub>	—	250	—	ns	R <sub>D</sub> =0.34Ω See Figure 10 ④
L <sub>D</sub>	—	5.0	—	nH	Between lead, 6 mm (0.25in.) from package and center of die contact
L <sub>S</sub>	—	13	—	nH	
C <sub>iss</sub>	—	2400	—	pF	V <sub>GS</sub> =0V
C <sub>oss</sub>	—	1300	—	pF	V <sub>DS</sub> =25V
C <sub>rss</sub>	—	190	—	pF	f=1.0MHz See Figure 5

**Source-Drain Ratings and Characteristics**

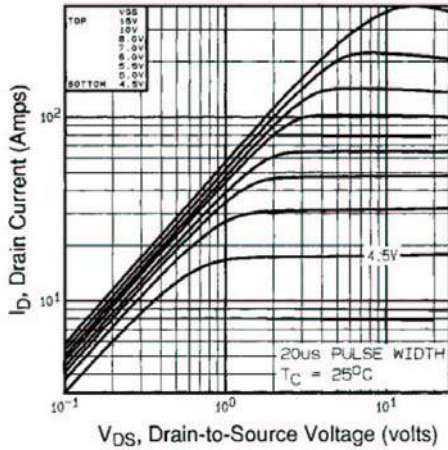
Parameter	Min.	Typ.	Max.	Units	Test Conditions
I <sub>S</sub>	—	—	70*	A	MOSFET symbol showing the integral reverse p-n junction diode.
I <sub>SM</sub>	—	—	290	A	
V <sub>SD</sub>	—	—	2.0	V	T <sub>J</sub> =25°C, I <sub>S</sub> =73A, V <sub>GS</sub> =0V ④
t <sub>rr</sub>	—	120	180	ns	T <sub>J</sub> =25°C, I <sub>F</sub> =72A
Q <sub>rr</sub>	—	0.50	0.80	μC	di/dt=100A/μs ④
t <sub>on</sub>	Intrinsic turn-on time is negligible (turn-on is dominated by L <sub>S</sub> +L <sub>D</sub> )				

Notes:

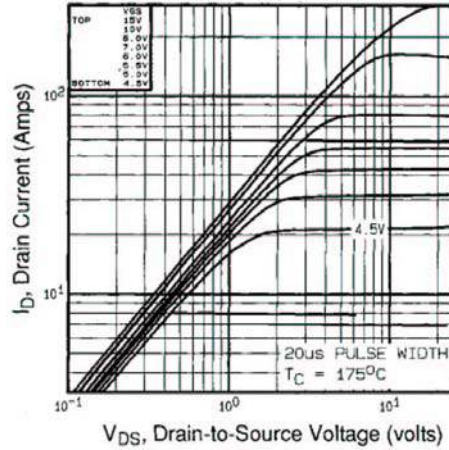
① Repetitive rating; pulse width limited by max. junction temperature (See Figure 11)      ③ I<sub>SD</sub>≤72A, di/dt≤200A/μs, V<sub>DD</sub>≤V<sub>(BR)DSS</sub>, T<sub>J</sub>≤175°C

② V<sub>DD</sub>=25V, starting T<sub>J</sub>=25°C, L=43μH, R<sub>G</sub>=25Ω, I<sub>AS</sub>=73A (See Figure 12)      ④ Pulse width ≤ 300 μs; duty cycle ≤2%.

\* Current limited by the package, (Die Current =73A)

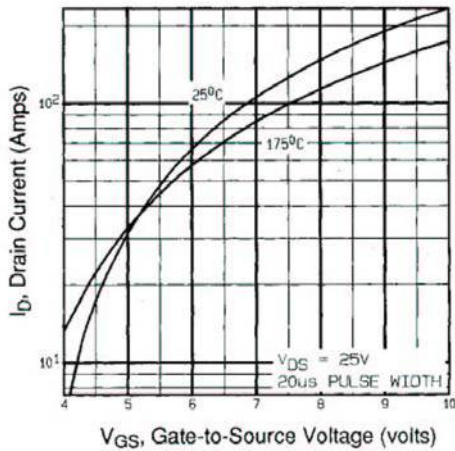


**Fig 1.** Typical Output Characteristics,  
 $T_C=25^\circ\text{C}$

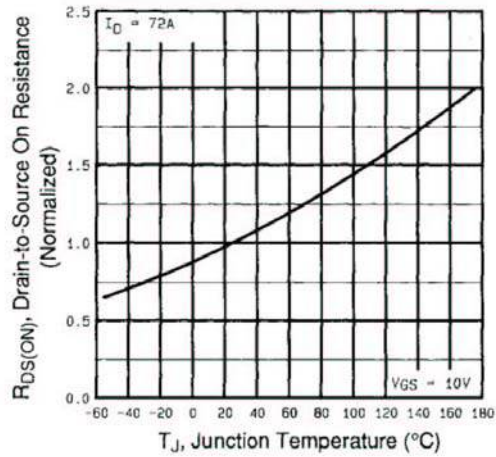


**Fig 2.** Typical Output Characteristics,  
 $T_C=175^\circ\text{C}$

DATA SHEETS

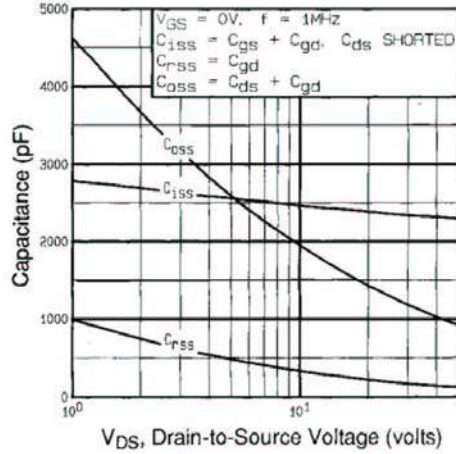


**Fig 3.** Typical Transfer Characteristics

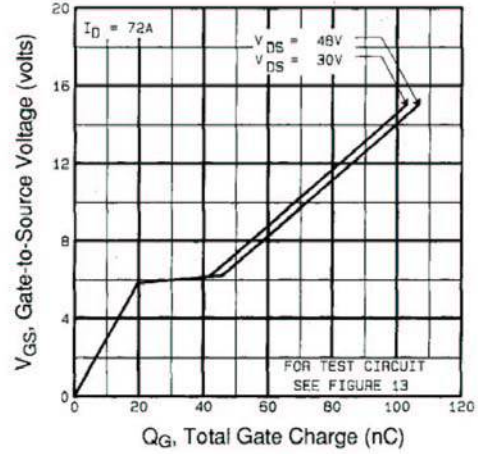


**Fig 4.** Normalized On-Resistance  
Vs. Temperature

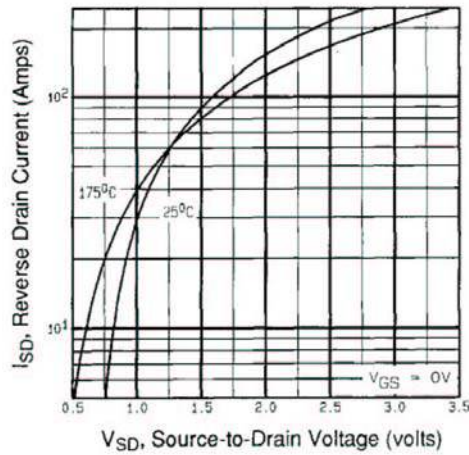




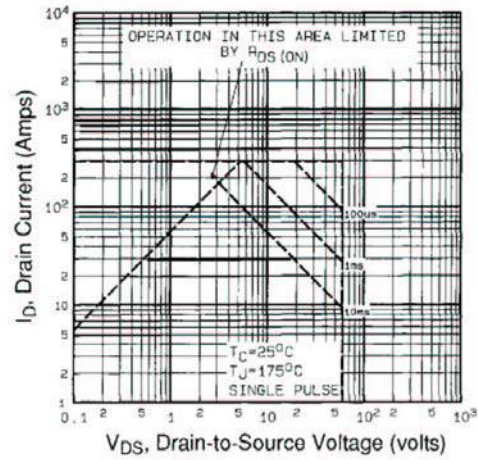
**Fig 5.** Typical Capacitance Vs. Drain-to-Source Voltage



**Fig 6.** Typical Gate Charge Vs. Gate-to-Source Voltage



**Fig 7.** Typical Source-Drain Diode Forward Voltage



**Fig 8.** Maximum Safe Operating Area

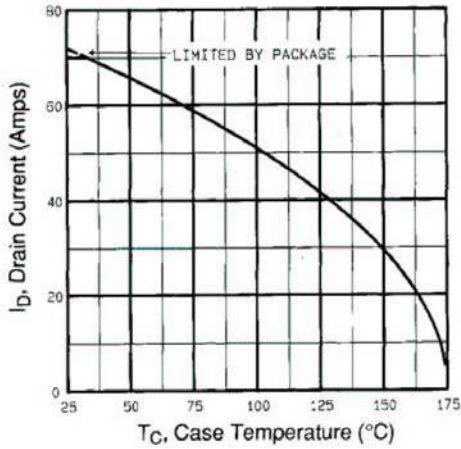


Fig 9. Maximum Drain Current Vs. Case Temperature

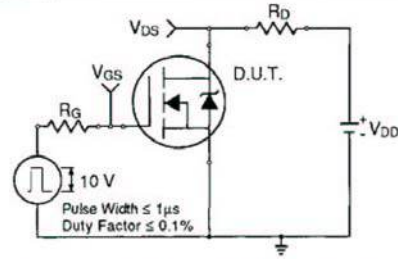


Fig 10a. Switching Time Test Circuit

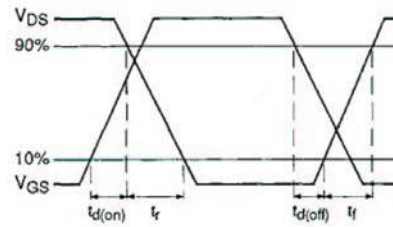


Fig 10b. Switching Time Waveforms

DATA SHEETS

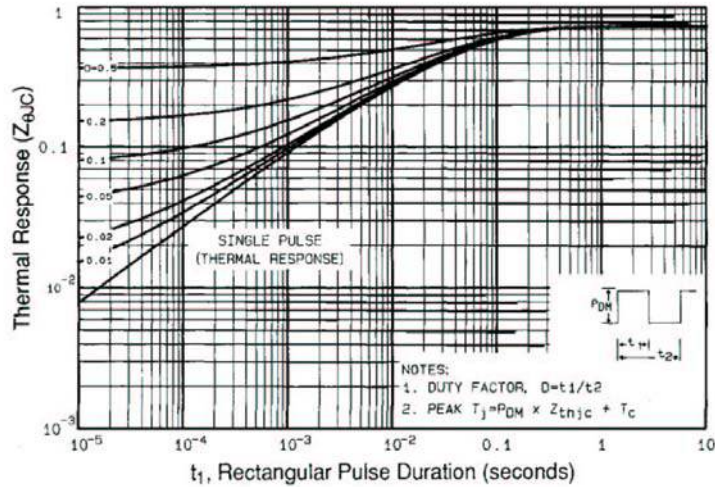


Fig 11. Maximum Effective Transient Thermal Impedance, Junction-to-Case

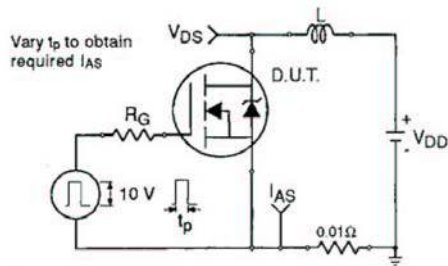


Fig 12a. Unclamped Inductive Test Circuit

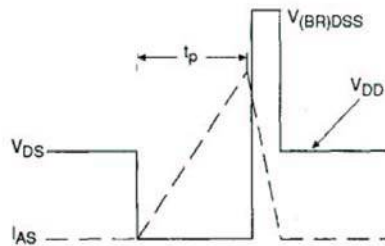


Fig 12b. Unclamped Inductive Waveforms

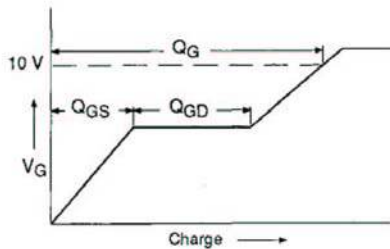


Fig 13a. Basic Gate Charge Waveform

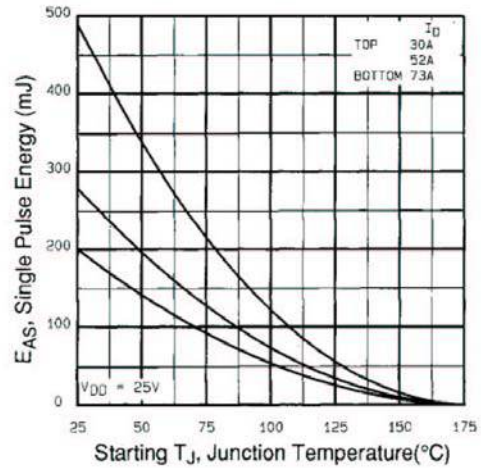


Fig 12c. Maximum Avalanche Energy Vs. Drain Current

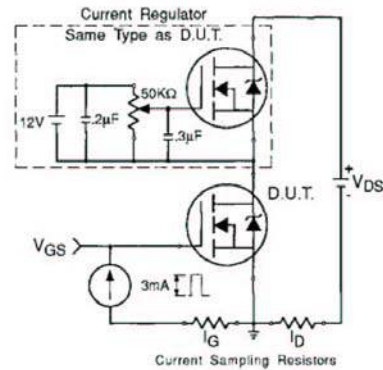


Fig 13b. Gate Charge Test Circuit

Appendix A: Figure 14, Peak Diode Recovery dv/dt Test Circuit – See page 1505

Appendix B: Package Outline Mechanical Drawing – See page 1511

Appendix C: Part Marking Information – See page 1517



## Notice

The products described herein were acquired by Vishay Intertechnology, Inc., as part of its acquisition of International Rectifier's Power Control Systems (PCS) business, which closed in April 2007. Specifications of the products displayed herein are pending review by Vishay and are subject to the terms and conditions shown below.

Specifications of the products displayed herein are subject to change without notice. Vishay Intertechnology, Inc., or anyone on its behalf, assumes no responsibility or liability for any errors or inaccuracies.

Information contained herein is intended to provide a product description only. No license, express or implied, by estoppel or otherwise, to any intellectual property rights is granted by this document. Except as provided in Vishay's terms and conditions of sale for such products, Vishay assumes no liability whatsoever, and disclaims any express or implied warranty, relating to sale and/or use of Vishay products including liability or warranties relating to fitness for a particular purpose, merchantability, or infringement of any patent, copyright, or other intellectual property right.

The products shown herein are not designed for use in medical, life-saving, or life-sustaining applications. Customers using or selling these products for use in such applications do so at their own risk and agree to fully indemnify Vishay for any damages resulting from such improper use or sale.

International Rectifier®, IR®, the IR logo, HEXFET®, HEXSense®, HEXDIP®, DOL®, INTERO®, and POWIRTRAIN® are registered trademarks of International Rectifier Corporation in the U.S. and other countries. All other product names noted herein may be trademarks of their respective owners.