

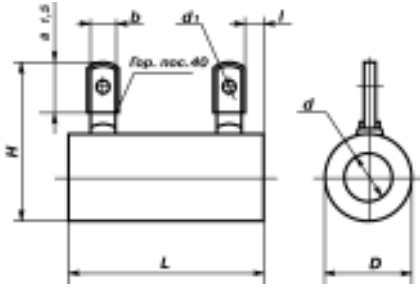
Резисторы отечественные

Содержание

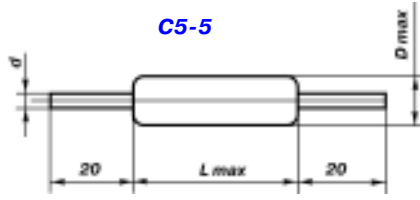
Наименование	стр.	Наименование	стр.
СП5-44-1	2	СП3-44	5
ПКВ	2	СП3-456	5
ОПЭВ	2	СП3-45а	5
ПЭВ	2	СП4-1в	6
С5-37	2	СП4-16	6
ПЭ	2	СП4-1а	6
С5-5	2	СП4-2Ма	6
С5-16	2	СП4-3	6
ПЭВР	2	СП5-1В	6
С5-35	2	СП5-2В	6
С5-47	2	СП5-2ВА	6
С5-43	2	СП5-2ВБ	6
ППБ-3	3	СП5-3ВА	6
ППБ-1	3	СП5-3В	6
ППБ-2	3	СП5-16ВБ	6
ППБ-15	3	СП5-16ВВ	6
ППБ-25	3	СП5-16ВГ	6
ППЗ-40	3	СП5-4В	6
ППБ-50	3	СП5-20ВА	6
ППЗ-47	3	СП5-16ВА	6
ППЗ-44	3	СП5-21А	7
ППЗ-41	3	СП5-22	7
СП-II	3	СП5-24	7
СП-I	3	СП5-30-I-15	7
СПЗ-3АМ	4	СП5-30-II-15	7
СПЗ-9а	4	СП5-30-I-25	7
СПЗ-96	4	СП5-30-II-25	7
СПЗ-1а	4	СП5-30-I-50	7
СПЗ-16	4	СП5-30-II-50	7
СП2-2	4	СП5-35А	7
СП-III	4	СП5-37В	7
СПЗ-4аМ	4	СП5-35Б	7
СПЗ-46М	4	СП5-39А	7
СПЗ-16а	4	КЭВ-0,5	8
СПЗ-166	4	СН1-1	8
СПЗ-16в	4	СН1-2	8
СПЗ-31м	4	КИМ	8
СПЗ-28	4	ММТ-1	8
СПЗ-27а	4	ММТ-4	8
СПЗ-196	4	ММТ-6	8
СПЗ-19а	4	ММТ-8	8
СПЗ-236 СПЗ-23в	4	МОУ	8
СПЗ-23а	4	С1-4	8
СПЗ-29вМ	5	ММТ-9	8
СПЗ-30А	5	С2-23	8
СПЗ-30В	5	С2-10	8
СПЗ-30М	5	С2-14	8
СПЗ-386	5	МОН	8
СПЗ-38д	5	С2-6	8
СПЗ-38г	5	С2-29в	8
СПЗ-37	5	ФСК	8
СПЗ-38в	5	СФ3-1	8
СПЗ-33-32	5	С3-14	8
СПЗ-38а	5	С2-33	8
СП4-1а	5	ТВО	8
СПЗ-39н	5	С2-36	8
СПЗ-39п	5	СФ3-4	8
СП4-1в	5		

Мощные отечественные проволочные резисторы

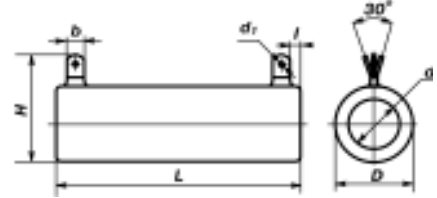
ОПЭВ



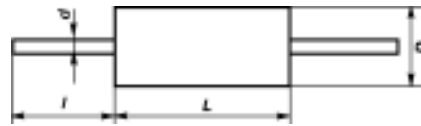
C5-5



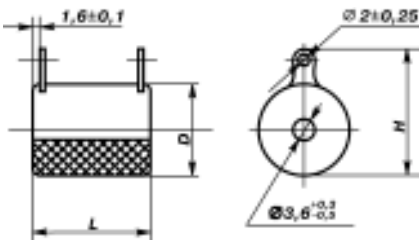
C5-35



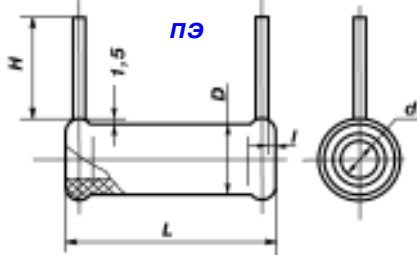
C5-16



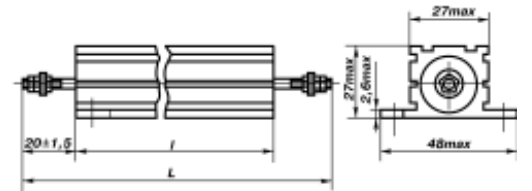
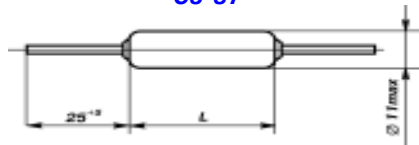
ПКВ



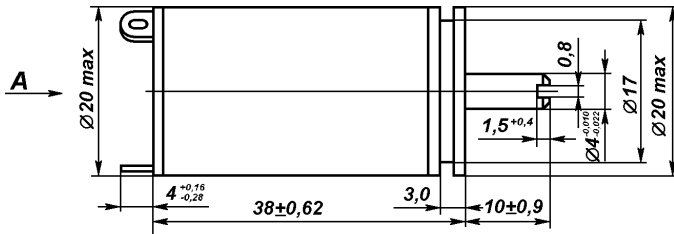
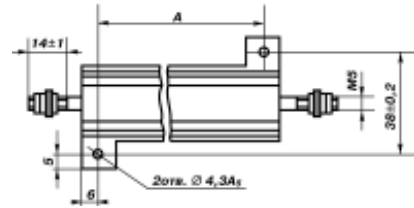
ПЭ



C5-37

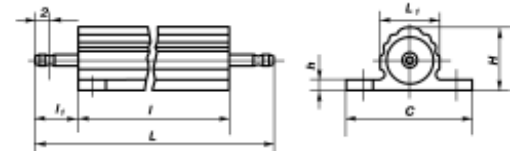
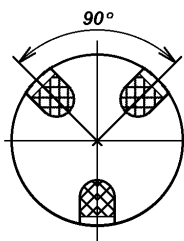


C5-43

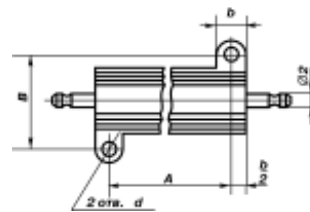


C15-44-1

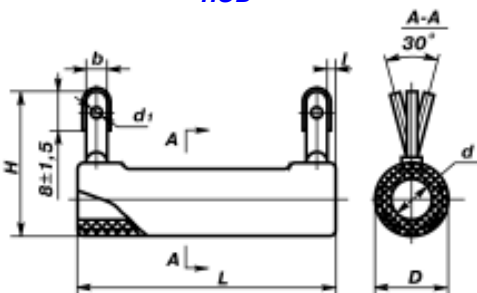
Вид А



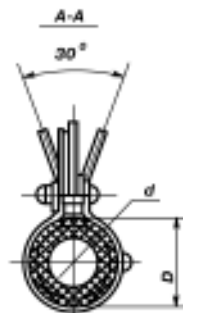
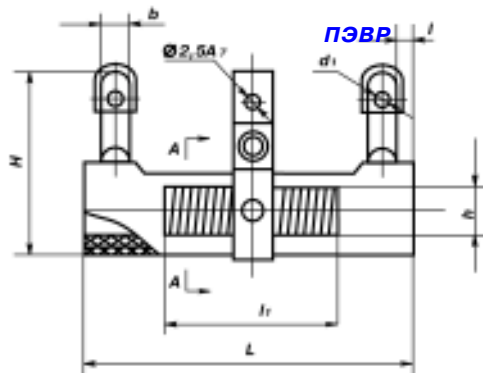
C5-47

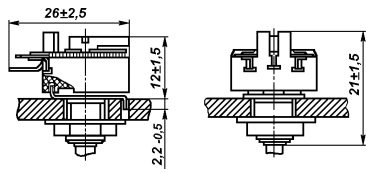


ПЭВ

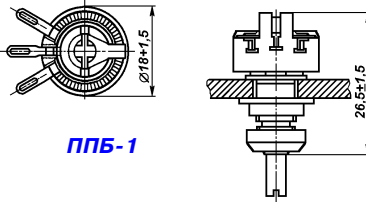


ПЭВР

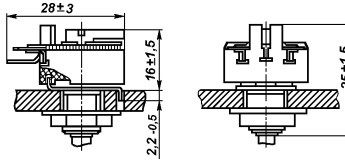




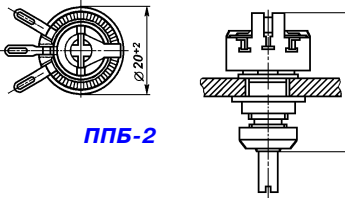
Вариант исполнения



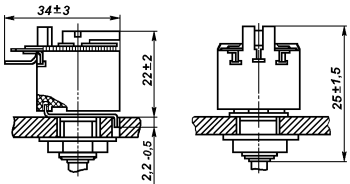
ППБ-1



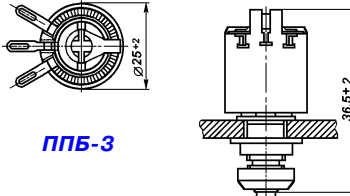
Вариант исполнения



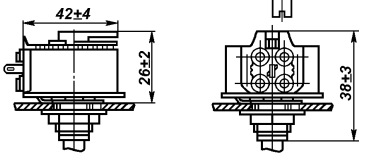
ППБ-2



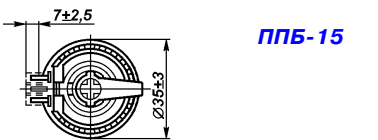
Вариант исполнения



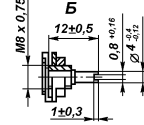
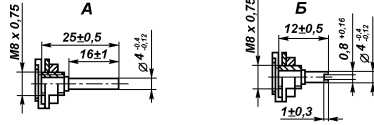
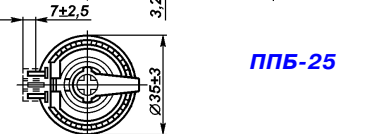
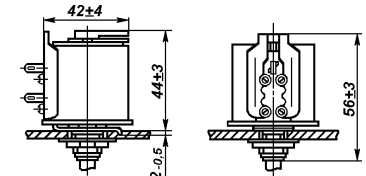
ППБ-3



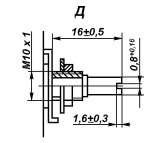
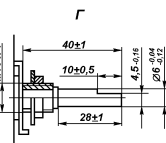
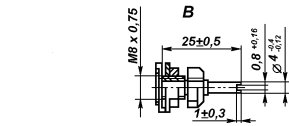
ППБ-15



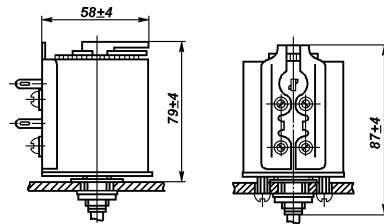
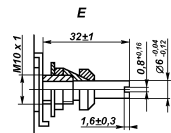
ППБ-25



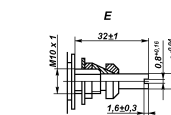
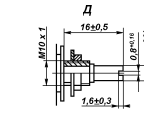
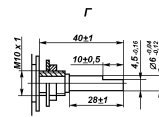
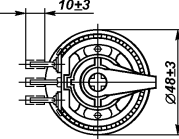
Варианты А, Б, В исполнения валов ППБ-1...ППБ-3



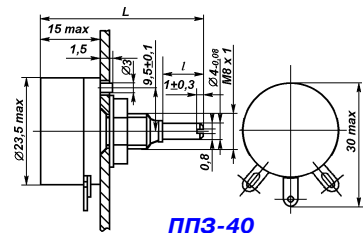
Варианты Г, Д, Е исполнения валов ППБ-15, ППБ-25



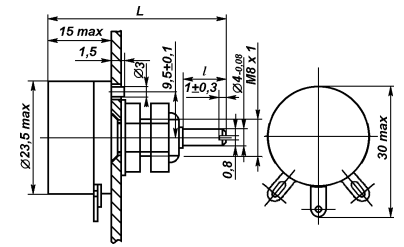
ППБ-50



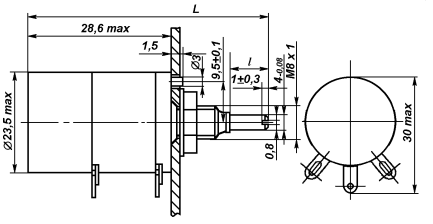
Варианты Г, Д, Е исполнения валов ППБ-50



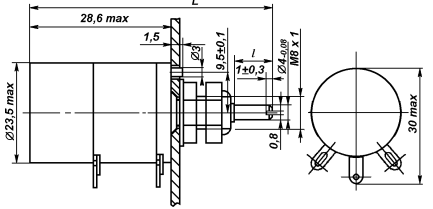
ППЗ-40



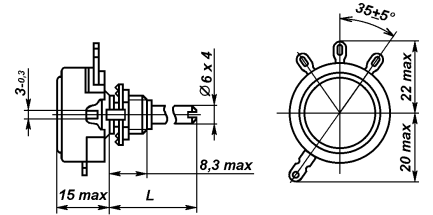
ППЗ-41



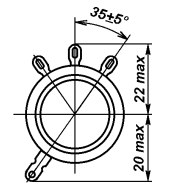
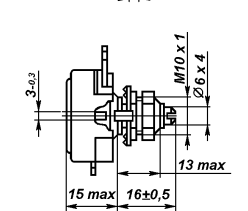
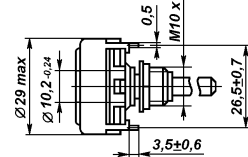
ППЗ-44



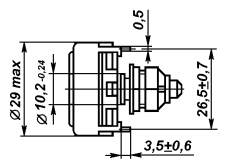
ППЗ-47



СП-1

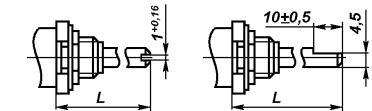


СП-II

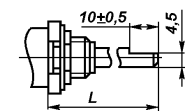


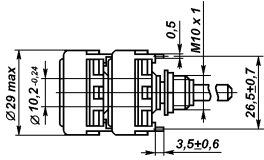
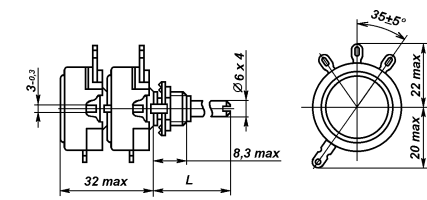
BC-2

BC-3

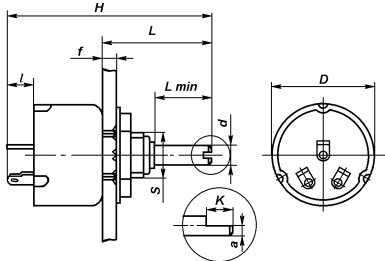


Варианты BC-2, BC-3 исполнения валов СП-I, СП-II, СП-III

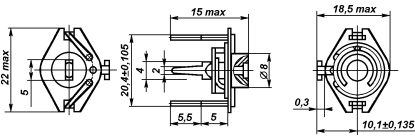




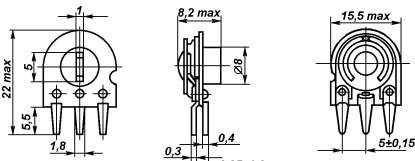
СП-III



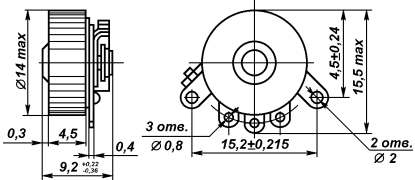
СП2-2



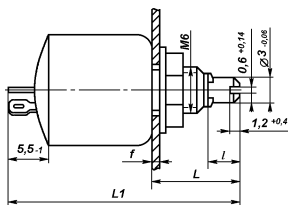
СП3-1a



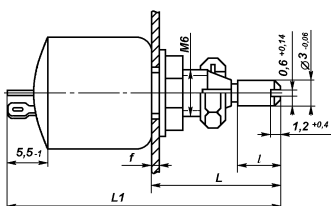
СП3-16



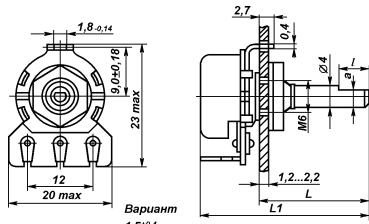
СП3-3AM



СП3-9a



СП3-96

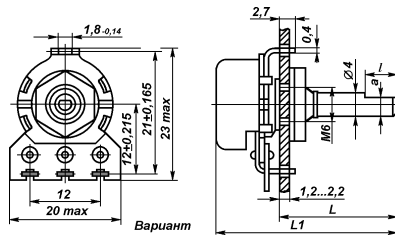


Вариант

1,5^{+0.4}

0,8^{+0.18}

СП3-4aM

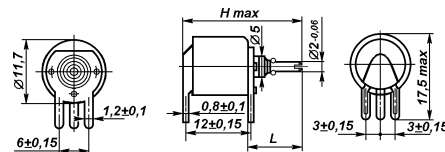


Вариант

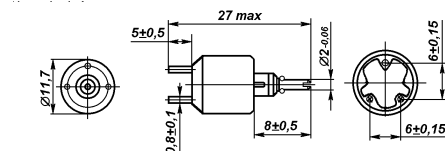
1,5^{+0.4}

0,8^{+0.18}

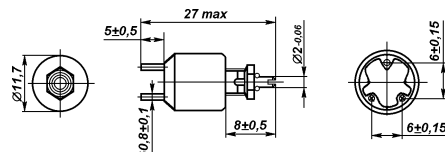
СП3-46M



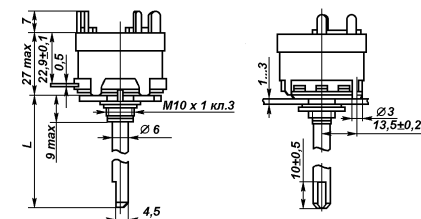
СП3-16a



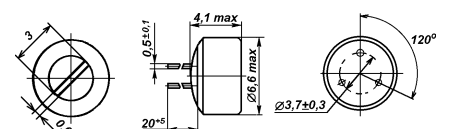
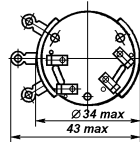
СП3-166



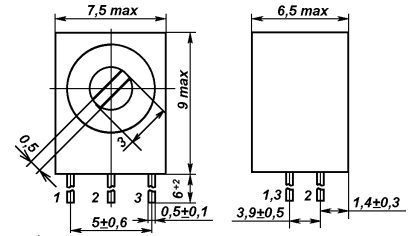
СП3-16в



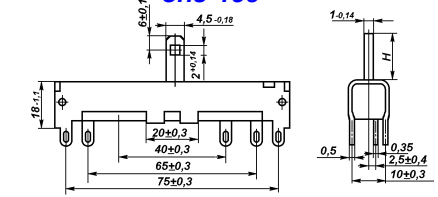
СП3-31M



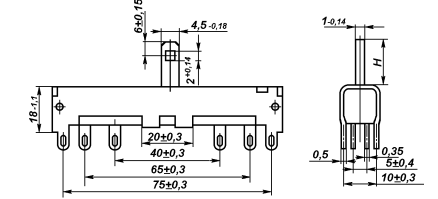
СП3-19a



СП3-196

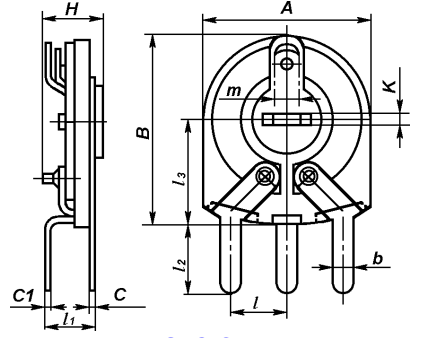


СП3-23a

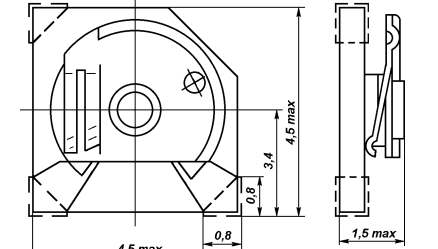


СП3-236

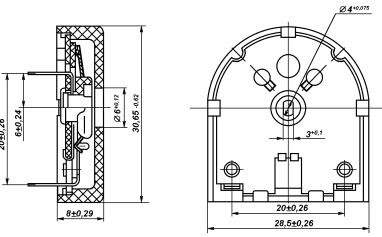
СП3-23в



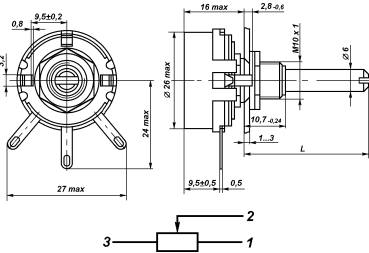
СП3-27a



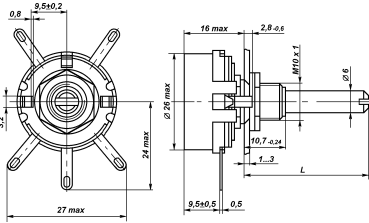
СП3-28



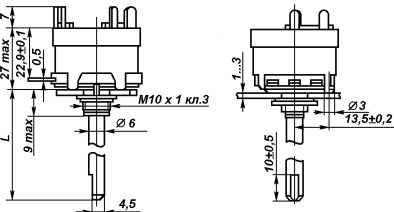
CP3-29BM



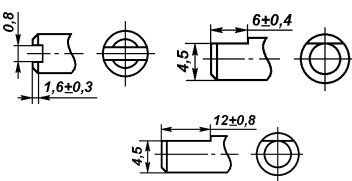
CP3-30A



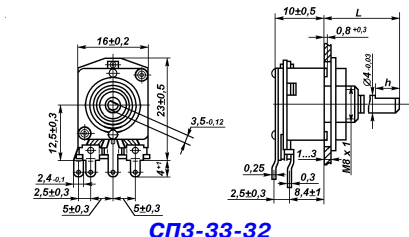
CP3-30B



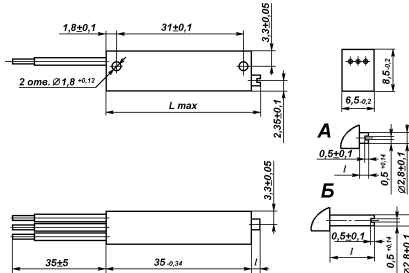
CP3-30M



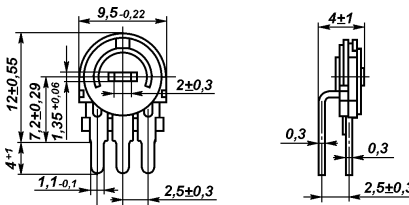
Варианты исполнения валов CP3-30A...CP3-30M



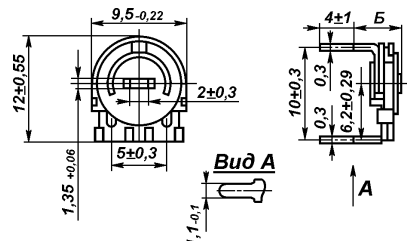
CP3-33-32



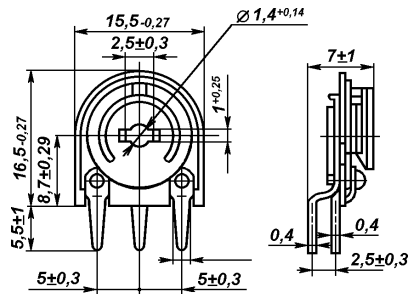
CP3-37



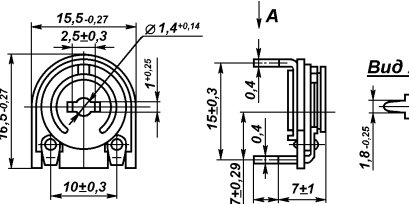
CP3-38a



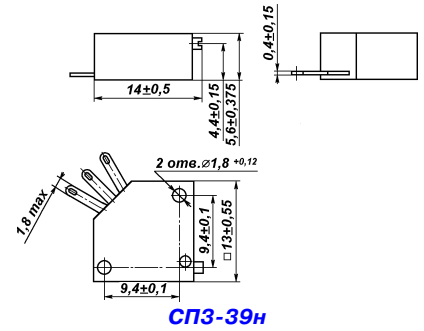
**CP3-38b
CP3-38d**



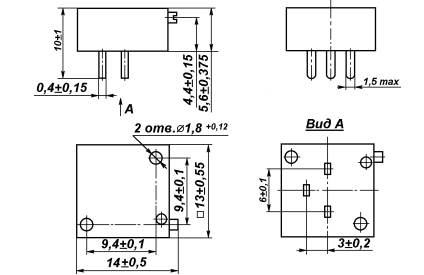
CP3-38b



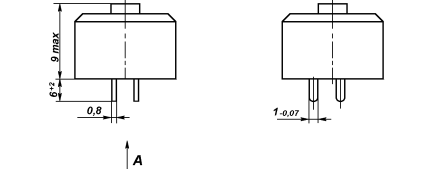
CP3-38r



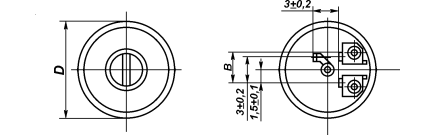
CP3-39H



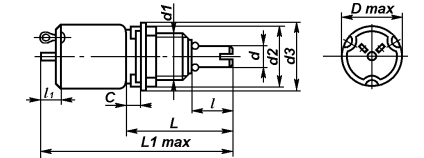
CP3-39H



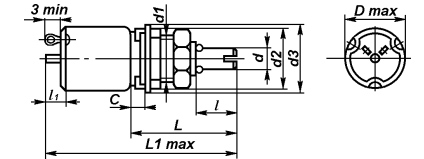
CP3-39H



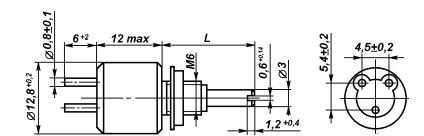
CP3-44



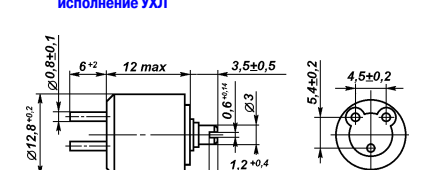
CP3-45a



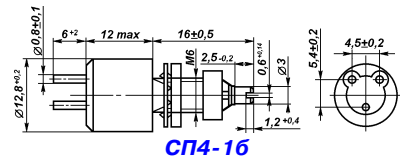
CP3-45b



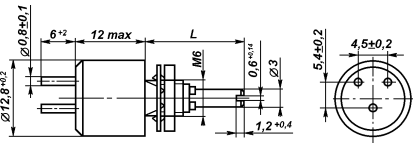
CP4-1a



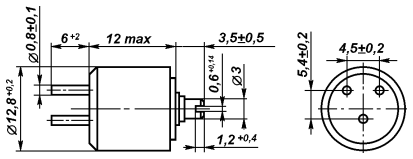
CP4-1b



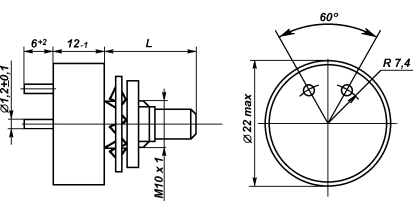
СП4-16



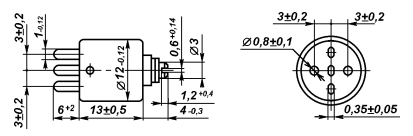
СП4-1а
исполнение В



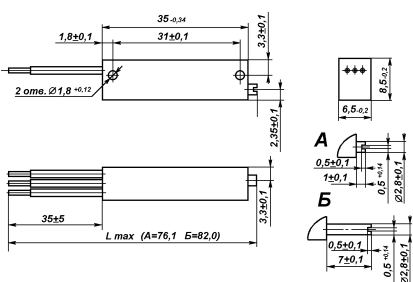
СП4-1в
исполнение УХЛ



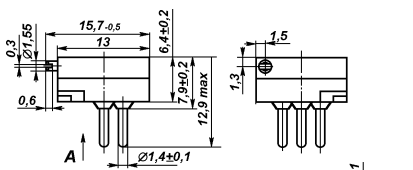
СП4-2Ма



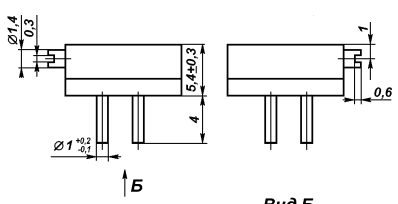
СП4-3



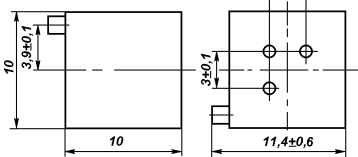
СП5-1В



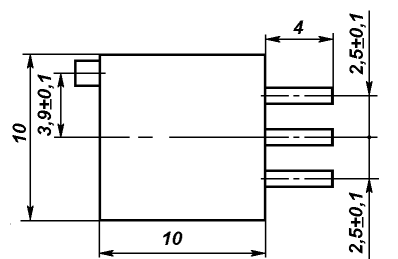
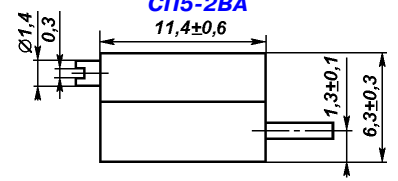
СП5-2В



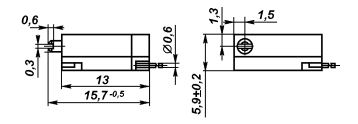
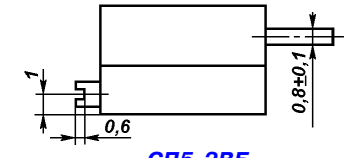
Вид Б



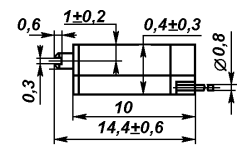
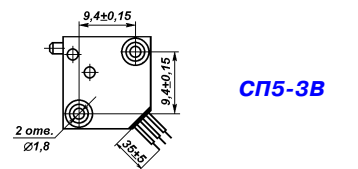
СП5-2ВА



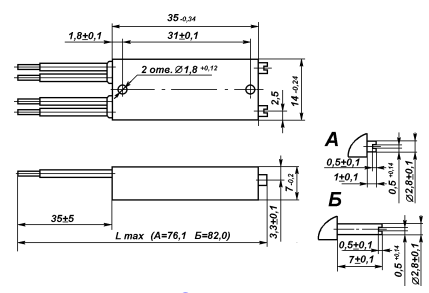
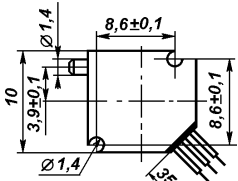
СП5-2ВБ



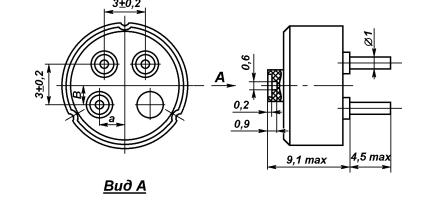
СП5-3В



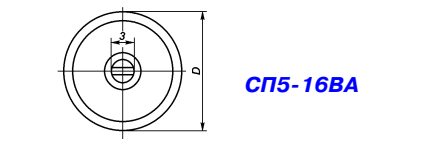
СП5-3ВА



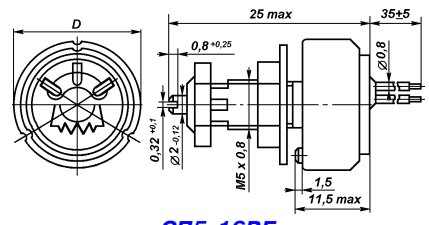
СП5-4В



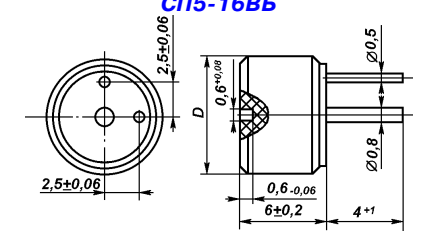
Вид А



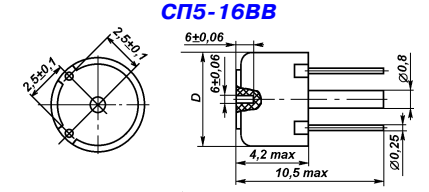
СП5-16ВА



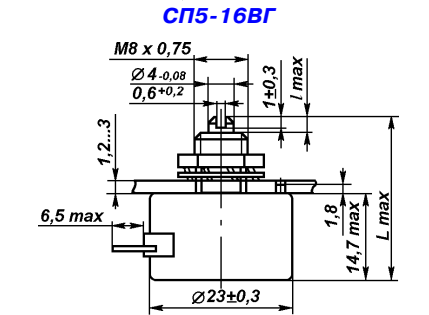
СП5-16ВБ



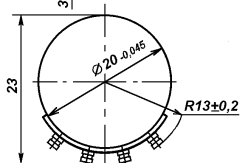
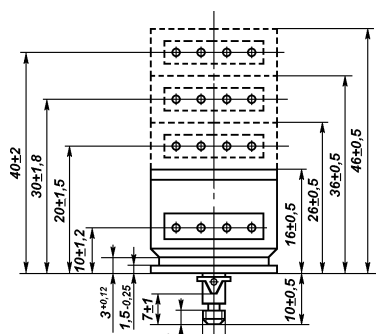
СП5-16ВВ



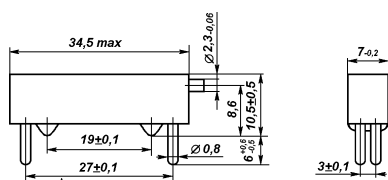
СП5-16ВГ



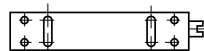
СП5-20ВА



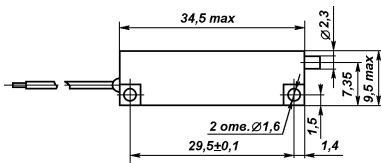
CP5-21A



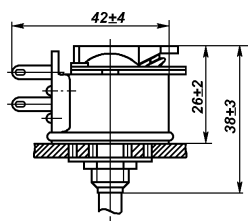
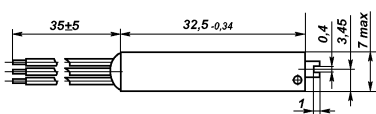
Вид А



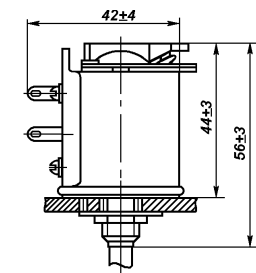
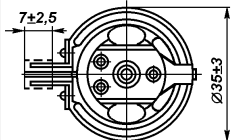
CP5-22



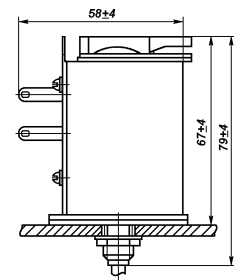
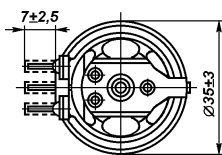
CP5-24



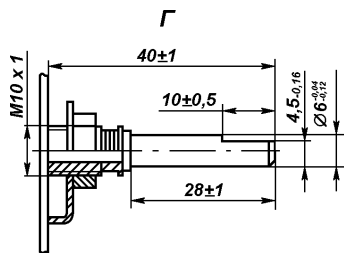
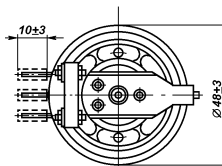
**CP5-30-I-15
CP5-30-II-15**



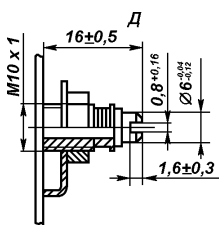
**CP5-30-I-25
CP5-30-II-25**



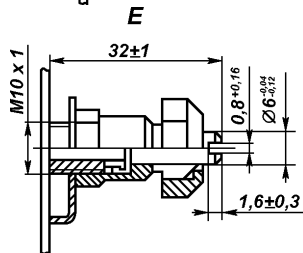
**CP5-30-I-50
CP5-30-II-50**



Г

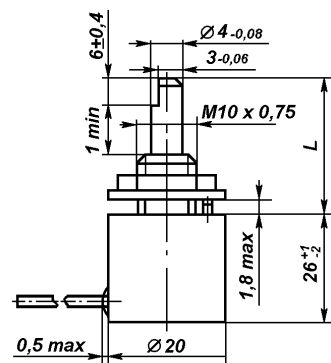


Д

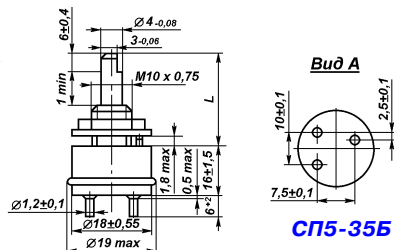
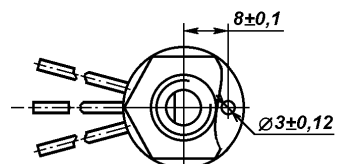


Е

Варианты Г, Д, Е
исполнения валов CP5-30-I-15...CP5-30-II-50

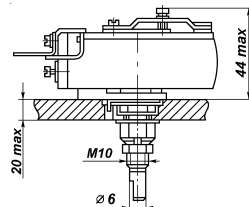
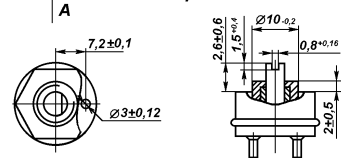


CP5-35A

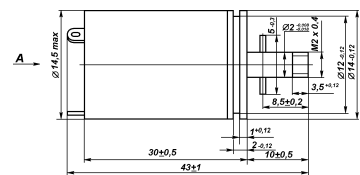
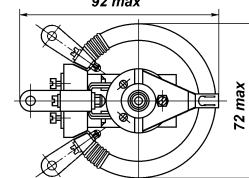


CP5-35B

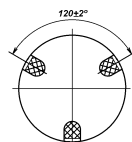
Вариант исполнения вала



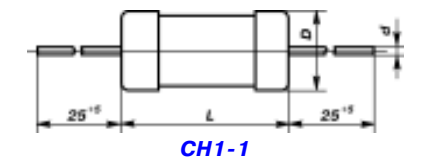
CP5-37B



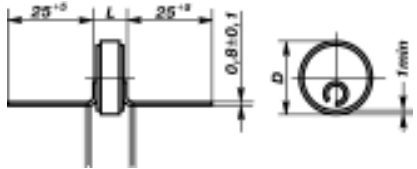
Вид А



CP5-39A



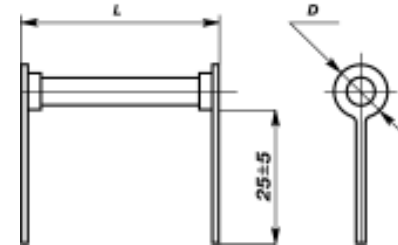
CH1-1



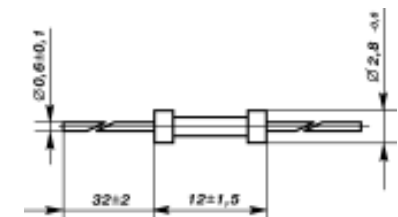
CH1-2



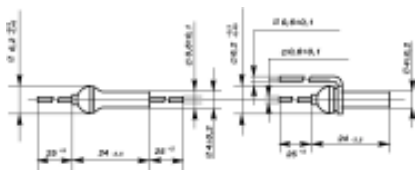
КИМ



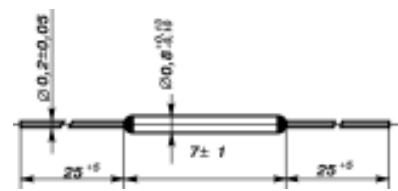
КЭВ-0,5



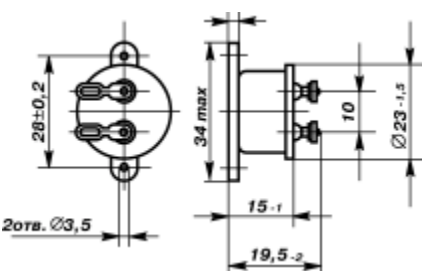
ММТ-1



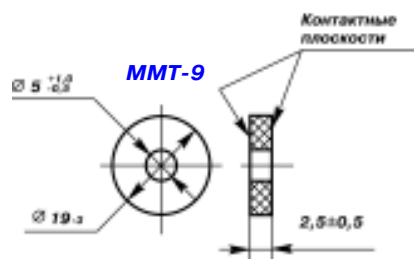
ММТ-4



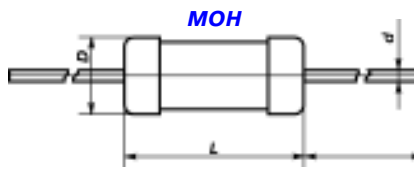
ММТ-6



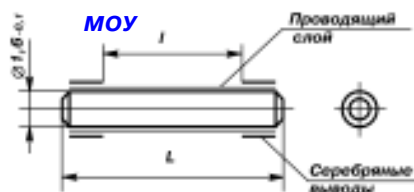
ММТ-8



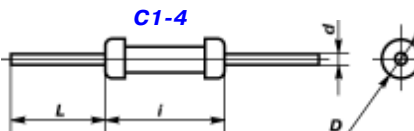
ММТ-9



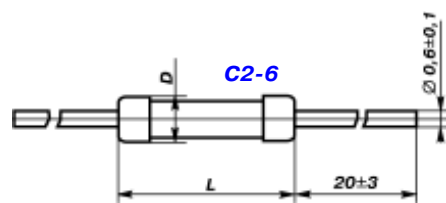
МОН



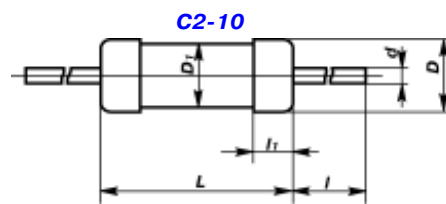
МОУ



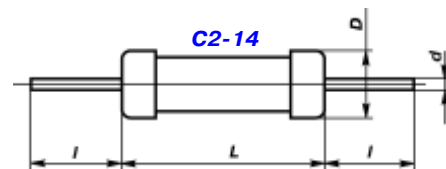
С1-4



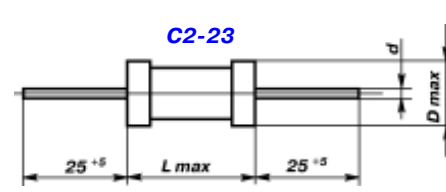
С2-6



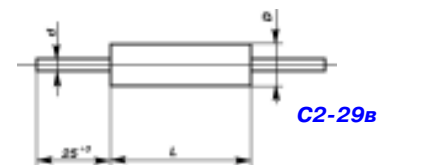
С2-10



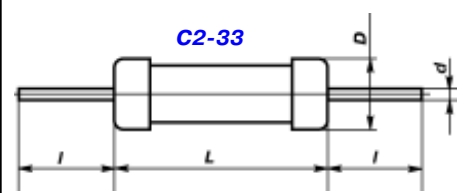
С2-14



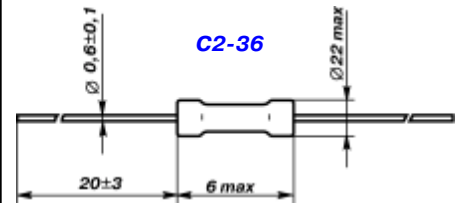
С2-23



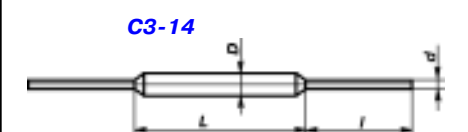
С2-29В



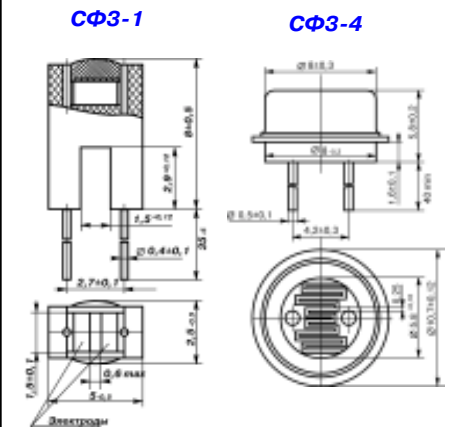
С2-33



С2-36

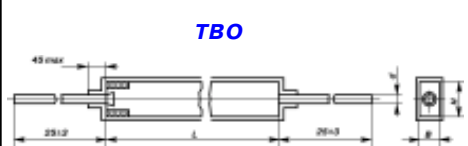


С3-14

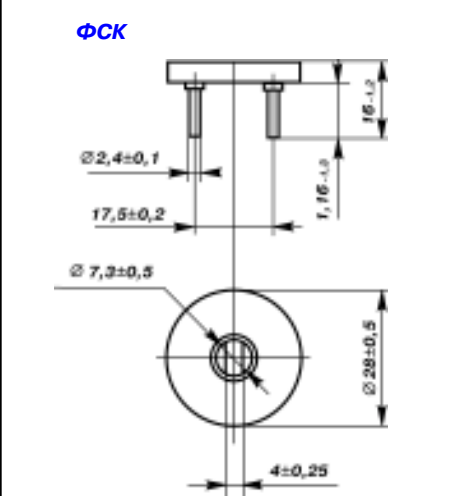


СФ3-1

СФ3-4



ТВО



ФСК