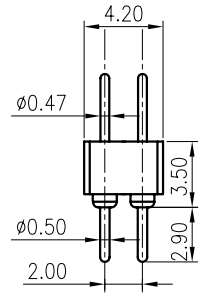
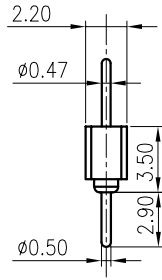


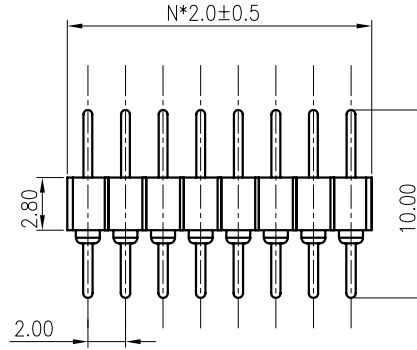
REV.	DESCRIPTION	DRAWN	CHECKED	APPROVED
A	NEW RELEASE	LL 06/30/06'		



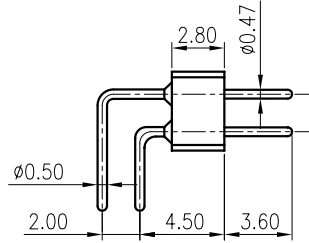
Dual ROWS



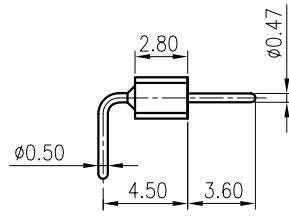
Single ROW



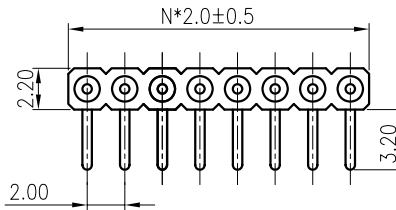
V/T TYPE



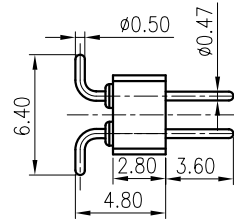
Dual ROWS



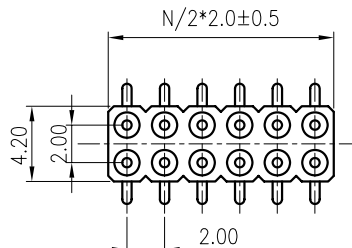
Single ROW



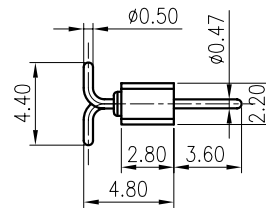
R/A TYPE



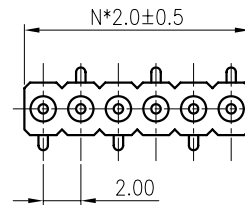
Dual ROWS



Single ROW



Dual ROWS



Single ROW

SMT TYPE

NOTES:

- ELECTRICAL CHARACTERISTICS:
 - CONTACT RESISTANCE: 20mΩ Max.
 - DIELECTRIC WITHSTANDING VOLTAGE: 500V AC(rms) FOR 1 MINUTE.
 - INSULATION RESISTANCE: 1000MΩ Min.
- ENVIRONMENT CHARACTERISTICS:
 - OPERATING TEMPERATURE: 0°C~+85°C.
 - STORAGE TEMPERATURE: -20°C~+70°C.
- PRODUCT NUMBER CODE:

DS1004-01 - X X X X

- Housing color
B: Black
- Contact plating
1: Tin 150u"
2: Tin 200u"
3: G/F
4: Gold 3u"
5: Gold 10u"
6: Gold 15u"
- Mounting type:
V: V/T TYPE
R: R/A TYPE
S: SMT TYPE
- No.OF CONTACTS
1*1 - 1*40
2*1 - 2*40
- SERIES No.
DS1004-01

GENERAL TOLERANCE		ANGLE TOLERANCE		PROJECTION	TITLE
X.	±0.60	X.	±5'		DIP & SMT STRIPS ADAPTOR PITCH 2.00mm
.X	±0.38	.X	±3'	mm	
.XX	±0.25	.XX	±2'	A4	SERIES DS1004-01 SERIES
DRAWING TYPE	CUSTOMER		PSLM2-2x40 PSLM2-2x40 SMD PSLM2-1x40		
SCALE	1:1	SHEET	10F1		
DRAWING NO.	C-DS1004-01-XXXX				