



Features

- 1210 size
- Magnetic shielding
- High Q characteristic
- High current rating
- RoHS compliant*

CMH322522 Series - Shielded Wirewound Chip Inductor

Electrical Specifications

Bourns Part No.	Inductance		Q Min.	Test Freq. MHz L _Q	SRF MHz Min.	DCR Ω Max.	I _{rms} mA Max.
	μH	Tol. %					
CMH322522-R10ML	0.10	±20	30	100	700	0.44	450
CMH322522-R12ML	0.12	±20	30	25.2	500	0.22	450
CMH322522-R15ML	0.15	±20	30	25.2	450	0.25	450
CMH322522-R18ML	0.18	±20	30	25.2	400	0.25	450
CMH322522-R22ML	0.22	±20	30	25.2	350	0.32	450
CMH322522-R27ML	0.27	±20	30	25.2	320	0.36	450
CMH322522-R33ML	0.33	±20	30	25.2	300	0.40	450
CMH322522-R39ML	0.39	±20	30	25.2	250	0.45	450
CMH322522-R47ML	0.47	±20	30	25.2	220	0.50	450
CMH322522-R56ML	0.56	±20	30	25.2	180	0.55	450
CMH322522-R68ML	0.68	±20	30	25.2	160	0.60	450
CMH322522-R82ML	0.82	±20	30	25.2	140	0.65	450
CMH322522-1R0KL	1.0	±10	30	7.96	120	0.70	400
CMH322522-1R2KL	1.2	±10	30	7.96	100	0.75	390
CMH322522-1R5KL	1.5	±10	30	7.96	85	0.85	370
CMH322522-1R8KL	1.8	±10	30	7.96	80	0.90	350
CMH322522-2R2KL	2.2	±10	30	7.96	75	1.0	320
CMH322522-2R7KL	2.7	±10	30	7.96	70	1.1	290
CMH322522-3R3KL	3.3	±10	30	7.96	55	1.2	260
CMH322522-3R9KL	3.9	±10	30	7.96	50	1.3	250
CMH322522-4R7KL	4.7	±10	30	7.96	45	1.5	220
CMH322522-5R6KL	5.6	±10	30	7.96	40	1.6	200
CMH322522-6R8KL	6.8	±10	30	7.96	35	1.8	180
CMH322522-8R2KL	8.2	±10	30	7.96	30	2.0	170
CMH322522-100KL	10	±10	30	2.52	28	2.1	150
CMH322522-120KL	12	±10	30	2.52	20	2.5	140
CMH322522-150KL	15	±10	30	2.52	20	2.8	130
CMH322522-180KL	18	±10	30	2.52	20	3.3	120
CMH322522-220KL	22	±10	30	2.52	19	3.7	110
CMH322522-270KL	27	±10	30	2.52	18	5.0	80
CMH322522-330KL	33	±10	30	2.52	16	5.6	70
CMH322522-390KL	39	±10	30	2.52	15	6.4	65
CMH322522-470KL	47	±10	30	2.52	13	7.0	60
CMH322522-560KL	56	±10	30	2.52	12	8.0	55
CMH322522-680KL	68	±10	30	2.52	11	9.0	50
CMH322522-820KL	82	±10	30	2.52	10	10	45
CMH322522-101KL	100	±10	20	0.796	9	10	40

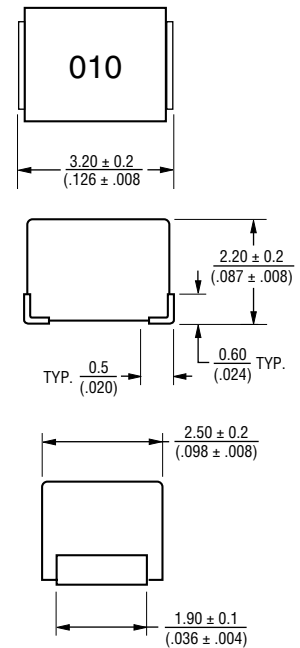
General Specifications

Temperature Rise20 °C max. at rated current
 Operating Temperature-55 °C to +125 °C
 Storage Temperature-55 °C to +125 °C
 Reflow Soldering .. 230 °C, 50 sec. max.
 Resistance to Soldering Heat 260 °C, 5 seconds

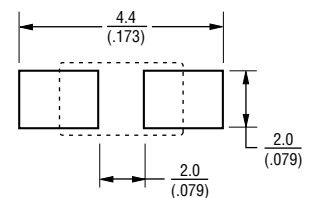
Materials

Core.....Ferrite
 Terminal Electrode.....Cu/Sn
 Packaging.....2,000 pcs. per reel

Product Dimensions



Recommended Layout



DIMENSIONS: $\frac{\text{MM}}{\text{(INCHES)}}$

*RoHS Directive 2002/95/EC Jan. 27, 2003 including annex and RoHS Recast 2011/65/EU June 8, 2011. Specifications are subject to change without notice.

The device characteristics and parameters in this data sheet can and do vary in different applications and actual device performance may vary over time. Users should verify actual device performance in their specific applications.

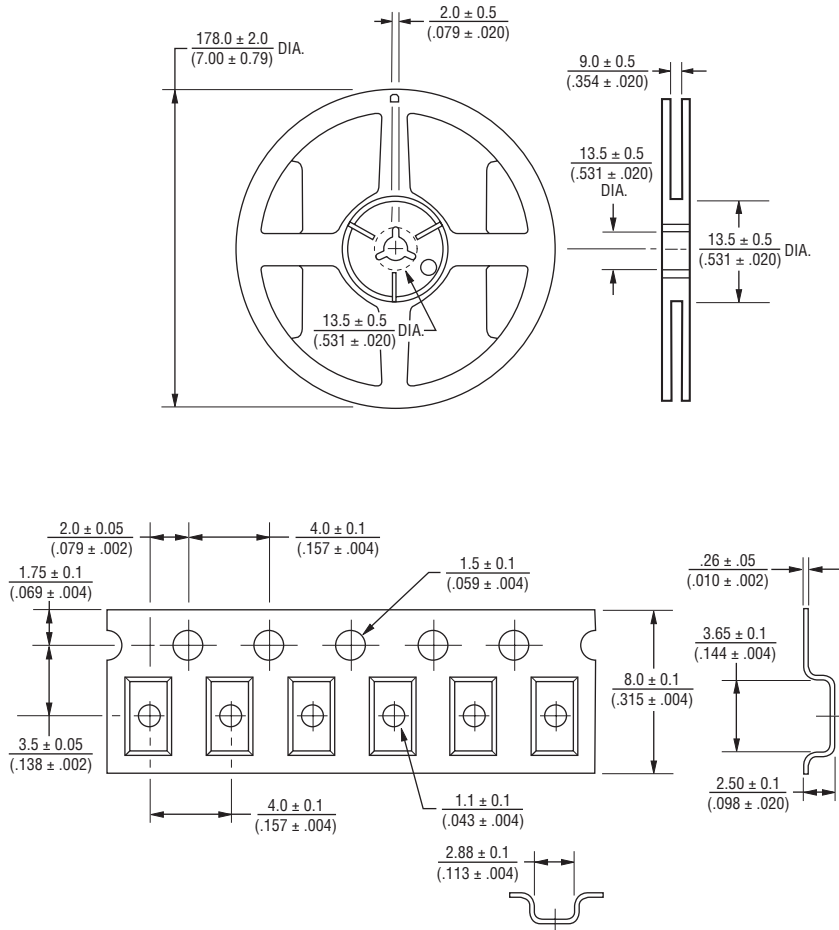
Applications

- Prevention of electromagnetic interference to signals on the secondary side of electronic equipment

CMH322522 Series - Shielded Wirewound Chip Inductor

BOURNS®

Packaging Specifications



DIMENSIONS: $\frac{\text{MM}}{\text{(INCHES)}}$

REV. 01/16

Specifications are subject to change without notice.

The device characteristics and parameters in this data sheet can and do vary in different applications and actual device performance may vary over time. Users should verify actual device performance in their specific applications.

Mouser Electronics

Authorized Distributor

Click to View Pricing, Inventory, Delivery & Lifecycle Information:

Bourns:

[CM322522-R39ML](#) [CM322522-R68ML](#) [CM322522-2R2KL](#) [CM322522-R39KL](#) [CM322522-1R2ML](#) [CM322522-3R3KL](#) [CM322522-R22ML](#) [CM322522-R68KL](#) [CM322522-220KL](#) [CM322522-R22KL](#) [CM322522-2R7ML](#) [CM322522-1R0KL](#) [CM322522-1R8KL](#) [CM322522-4R7KL](#) [CM322522-R82KL](#) [CM322522-8R2KL](#) [CM322522-101KL](#) [CM322522-R47KL](#) [CM322522-121KL](#) [CM322522-R15ML](#) [CM322522-390KL](#) [CM322522-R56KL](#) [CM322522-100JL](#) [CM322522-R10KL](#) [CM322522-R12KL](#) [CM322522-R18KL](#) [CM322522-151KL](#) [CM322522-680KL](#) [CM322522-820KL](#) [CM322522-R66KL](#) [CM322522-1R2KL](#) [CM322522-R27KL](#) [CM322522-3R9KL](#) [CM322522-270KL](#) [CM322522-1R5KL](#) [CM322522-470KL](#) [CM322522-R82ML](#) [CM322522-R47ML](#) [CM322522-R56ML](#) [CM322522-180KL](#) [CM322522-100KL](#) [CM322522-R15KL](#) [CM322522-330KL](#) [CM322522-1R8ML](#) [CM322522-R33KL](#) [CM322522-R18ML](#) [CM322522-120KL](#) [CM322522-2R7KL](#) [CM322522-560KL](#) [CM322522-5R6KL](#) [CM322522-150KL](#) [CM322522-R27ML](#) [CM322522-6R8KL](#) [CM322522-150JL](#) [CM322522-6R8JL](#) [CM322522-8R2JL](#) [CMH322522-R18ML](#) [CMH322522-R47ML](#) [CMH322522-R12ML](#) [CMH322522-R56ML](#) [CMH322522-R10ML](#) [CMH322522-R15ML](#) [CMH322522-R68ML](#) [CMH322522-R82ML](#) [CMH322522-R33ML](#) [CMH322522-R22ML](#) [CMH322522-R39ML](#) [CMH322522-R27ML](#)