

PC724V

High Input Current Type Photocoupler

* Lead forming type (W type) and taping reel type (P type) are also available. (PC724W/PC724VP)

■ Features

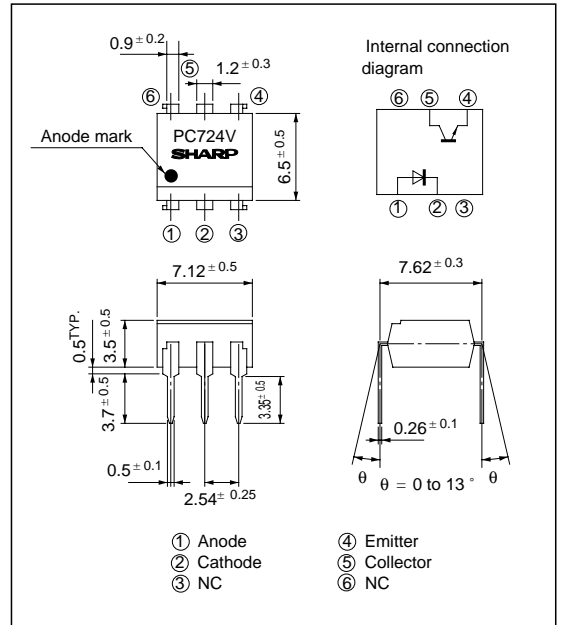
1. High input current (I_F : MAX. 150mA)
2. High isolation voltage between input and output
(V_{iso} : 5 000V_{rms})
3. Standard dual-in-line package
4. Recognized by UL, file no. E64380

■ Applications

1. Telephone sets
2. I/O interfaces for microcomputer
3. System appliances, measuring instruments
4. Signal transmission between circuits of different potentials and impedances

■ Outline Dimensions

(Unit : mm)



■ Absolute Maximum Ratings

($T_a = 25^\circ\text{C}$)

	Parameter	Symbol	Rating	Unit
Input	Forward current	I_F	150	mA
	*1 Peak forward current	I_{FM}	1	A
	Reverse voltage	V_R	6	V
	Power dissipation	P	230	mW
Output	Collector-emitter voltage	V_{CEO}	35	V
	Emitter-collector voltage	V_{ECO}	6	V
	Collector current	I_C	80	mA
	Collector power dissipation	P_C	160	mW
Total power dissipation		P_{tot}	320	mW
*2 Isolation voltage		V_{iso}	5 000	V _{rms}
Operating temperature		T_{opr}	- 25 to + 100	$^\circ\text{C}$
Storage temperature		T_{stg}	- 55 to + 125	$^\circ\text{C}$
*3 Soldering temperature		T_{sol}	260	$^\circ\text{C}$

*1 Pulse width $\leq 100\mu\text{s}$, Duty ratio : 0.001

*2 40 to 60% RH, AC for 1 minute

*3 For 10 seconds

■ Electro-optical Characteristics

($T_a = 25^\circ\text{C}$)

Parameter		Symbol	Conditions	MIN.	TYP.	MAX.	Unit	
Input	Forward voltage	V_F	$I_F = 100\text{mA}$	-	1.4	1.7	V	
	Peak forward voltage	V_{FM}	$I_{FM} = 0.5\text{A}$	-	-	3.0	V	
	Reverse current	I_R	$V_R = 4\text{V}$	-	-	10	μA	
	Terminal capacitance	C_t	$V = 0, f = 1\text{kHz}$	-	30	250	pF	
Output	Collector dark current	I_{CEO}	$V_{CE} = 20\text{V}, I_F = 0$	-	-	10^{-7}	A	
Transfer characteristics	Current transfer ratio	CTR	$I_F = 100\text{mA}, V_{CE} = 2\text{V}$	20	-	80	%	
	Collector-emitter saturation voltage	$V_{CE(sat)}$	$I_F = 100\text{mA}, I_C = 1\text{mA}$	-	0.1	0.2	V	
	Isolation resistance	R_{ISO}	DC500V, 40 to 60% RH	5×10^{10}	1×10^{11}	-	Ω	
	Floating capacitance	C_f	$V = 0, f = 1\text{MHz}$	-	0.6	1.0	pF	
	Response time	Cut-off frequency	f_c	$V_{CE} = 5\text{V}, I_C = 2\text{mA}, R_L = 100\Omega, -3\text{dB}$	-	100	-	kHz
		Rise time	t_r	$V_{CE} = 5\text{V}, I_C = 2\text{mA}$	-	4	18	μs
Fall time	t_f	$R_L = 100\Omega$	-		3	18	μs	

Fig. 1 Forward Current vs. Ambient Temperature

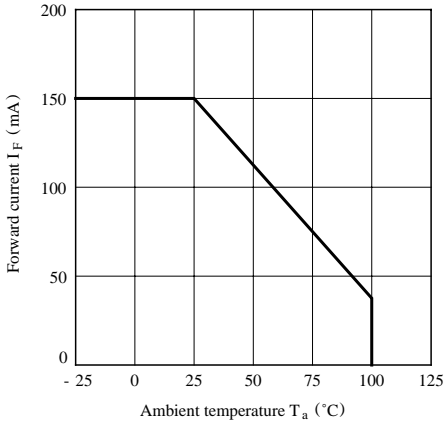


Fig. 2 Collector Power Dissipation vs. Ambient Temperature

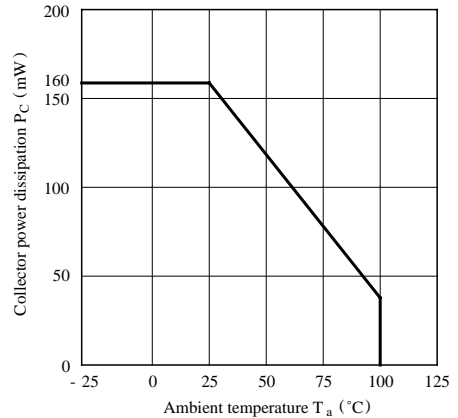


Fig. 3 Peak Forward Current vs. Duty Ratio

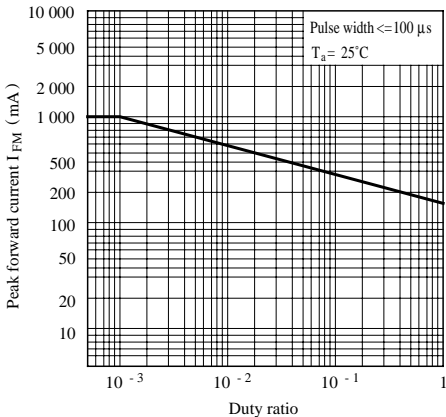


Fig. 4 Forward Current vs. Forward Voltage

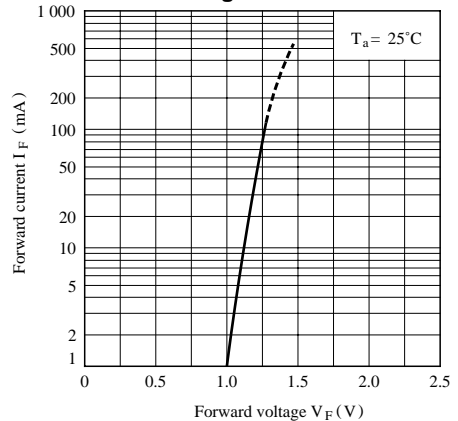


Fig. 5 Current Transfer Ratio vs. Forward Current

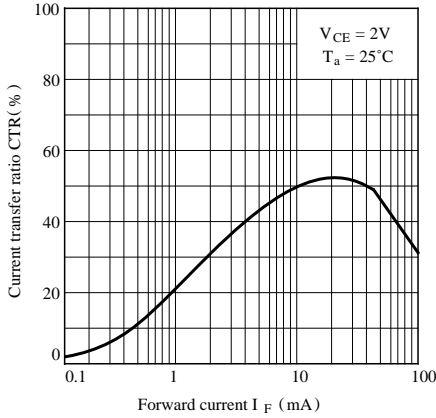


Fig. 6 Collector Current vs. Collector-emitter Voltage

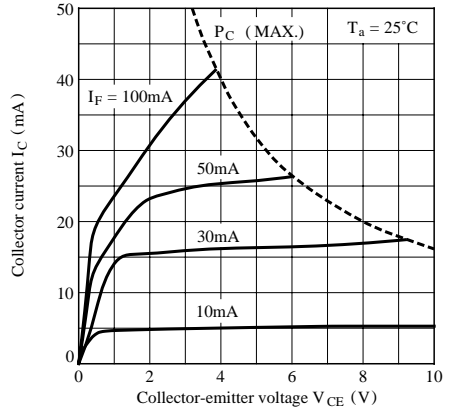


Fig. 7 Collector Dark Current vs. Ambient Temperature

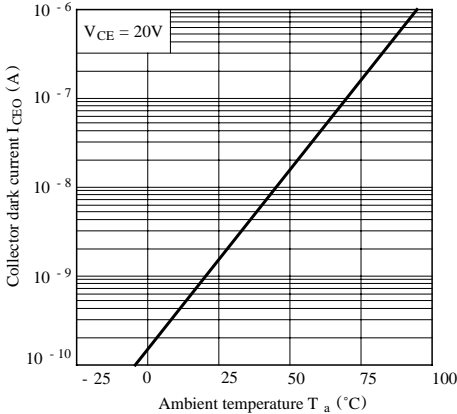


Fig. 8 Response Time vs. Load Resistance

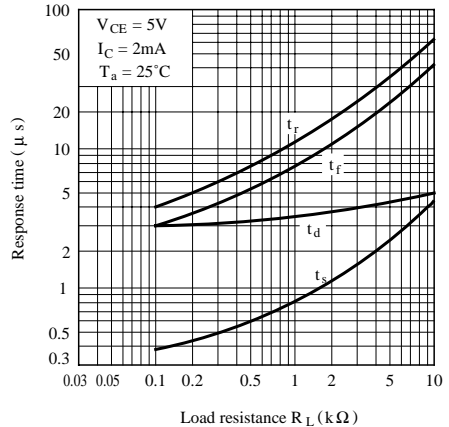
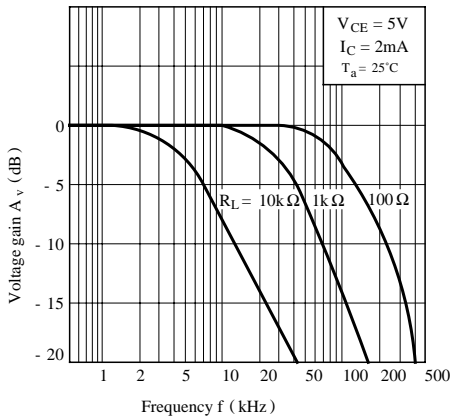
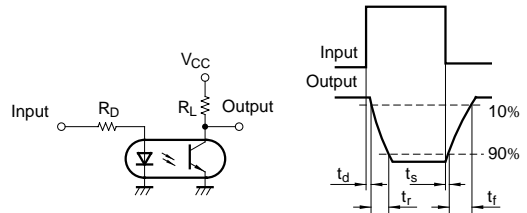


Fig. 9 Frequency Response



Test Circuit for Response Time



Test Circuit for Frequency Response

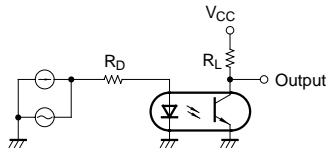
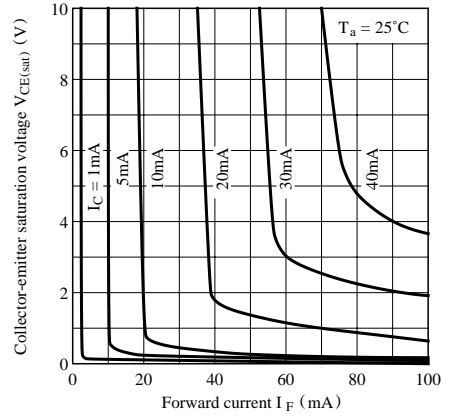


Fig.10 Collector-emitter Saturation Voltage vs. Forward Current



● Please refer to the chapter “Precautions for Use”.