

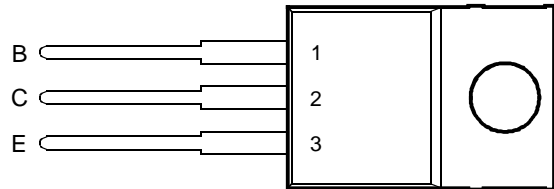
# TIP110, TIP111, TIP112 NPN SILICON POWER DARLINGTONS

Copyright © 1997, Power Innovations Limited, UK

DECEMBER 1971 - REVISED MARCH 1997

- **Designed for Complementary Use with TIP115, TIP116 and TIP117**
- **50 W at 25°C Case Temperature**
- **4 A Continuous Collector Current**
- **Minimum  $h_{FE}$  of 500 at 4 V, 2 A**

TO-220 PACKAGE  
(TOP VIEW)



Pin 2 is in electrical contact with the mounting base.

MDTRACA

## absolute maximum ratings at 25°C case temperature (unless otherwise noted)

RATING		SYMBOL	VALUE	UNIT
Collector-base voltage ( $I_E = 0$ )	TIP110	$V_{CBO}$	60	V
	TIP111		80	
	TIP112		100	
Collector-emitter voltage ( $I_B = 0$ )	TIP110	$V_{CEO}$	60	V
	TIP111		80	
	TIP112		100	
Emitter-base voltage		$V_{EBO}$	5	V
Continuous collector current		$I_C$	4	A
Peak collector current (see Note 1)		$I_{CM}$	6	A
Continuous base current		$I_B$	50	mA
Continuous device dissipation at (or below) 25°C case temperature (see Note 2)		$P_{tot}$	50	W
Continuous device dissipation at (or below) 25°C free air temperature (see Note 3)		$P_{tot}$	2	W
Unclamped inductive load energy (see Note 4)		$\frac{1}{2}LI_C^2$	25	mJ
Operating junction temperature range		$T_j$	-65 to +150	°C
Storage temperature range		$T_{stg}$	-65 to +150	°C
Lead temperature 3.2 mm from case for 10 seconds		$T_L$	260	°C

- NOTES: 1. This value applies for  $t_p \leq 0.3$  ms, duty cycle  $\leq 10\%$ .  
 2. Derate linearly to 150°C case temperature at the rate of 0.4 W/°C.  
 3. Derate linearly to 150°C free air temperature at the rate of 16 mW/°C.  
 4. This rating is based on the capability of the transistor to operate safely in a circuit of:  $L = 20$  mH,  $I_{B(on)} = 5$  mA,  $R_{BE} = 100 \Omega$ ,  $V_{BE(off)} = 0$ ,  $R_S = 0.1 \Omega$ ,  $V_{CC} = 20$  V.

## PRODUCT INFORMATION

Information is current as of publication date. Products conform to specifications in accordance with the terms of Power Innovations standard warranty. Production processing does not necessarily include testing of all parameters.

# TIP110, TIP111, TIP112

## NPN SILICON POWER DARLINGTONS

DECEMBER 1971 - REVISED MARCH 1997

### electrical characteristics at 25°C case temperature

PARAMETER		TEST CONDITIONS			MIN	TYP	MAX	UNIT
$V_{(BR)CEO}$	Collector-emitter breakdown voltage	$I_C = 30 \text{ mA}$ (see Note 5)	$I_B = 0$	TIP110	60			V
				TIP111	80			
				TIP112	100			
$I_{CEO}$	Collector-emitter cut-off current	$V_{CE} = 30 \text{ V}$ $V_{CE} = 40 \text{ V}$ $V_{CE} = 50 \text{ V}$	$I_B = 0$	TIP110			2	mA
				TIP111			2	
				TIP112			2	
$I_{CBO}$	Collector cut-off current	$V_{CB} = 60 \text{ V}$ $V_{CB} = 80 \text{ V}$ $V_{CB} = 100 \text{ V}$	$I_E = 0$	TIP110			1	mA
				TIP111			1	
				TIP112			1	
$I_{EBO}$	Emitter cut-off current	$V_{EB} = 5 \text{ V}$	$I_C = 0$				2	mA
$h_{FE}$	Forward current transfer ratio	$V_{CE} = 4 \text{ V}$	$I_C = 1 \text{ A}$	(see Notes 5 and 6)	1000			
		$V_{CE} = 4 \text{ V}$	$I_C = 2 \text{ A}$		500			
$V_{CE(sat)}$	Collector-emitter saturation voltage	$I_B = 8 \text{ mA}$	$I_C = 2 \text{ A}$	(see Notes 5 and 6)			2.5	V
$V_{BE}$	Base-emitter voltage	$V_{CE} = 4 \text{ V}$	$I_C = 2 \text{ A}$	(see Notes 5 and 6)			2.8	V
$V_{EC}$	Parallel diode forward voltage	$I_E = 4 \text{ A}$	$I_B = 0$	(see Notes 5 and 6)			3.5	V

NOTES: 5. These parameters must be measured using pulse techniques,  $t_p = 300 \mu\text{s}$ , duty cycle  $\leq 2\%$ .

6. These parameters must be measured using voltage-sensing contacts, separate from the current carrying contacts.

### resistive-load-switching characteristics at 25°C case temperature

PARAMETER		TEST CONDITIONS †			MIN	TYP	MAX	UNIT
$t_{on}$	Turn-on time	$I_C = 2 \text{ A}$	$I_{B(on)} = 8 \text{ mA}$	$I_{B(off)} = -8 \text{ mA}$		2.6		$\mu\text{s}$
$t_{off}$	Turn-off time		$V_{BE(off)} = -5 \text{ V}$	$R_L = 15 \Omega$	$t_p = 20 \mu\text{s}$ , dc $\leq 2\%$		4.5	

† Voltage and current values shown are nominal; exact values vary slightly with transistor parameters.

TYPICAL CHARACTERISTICS

TYPICAL DC CURRENT GAIN  
 VS  
 COLLECTOR CURRENT

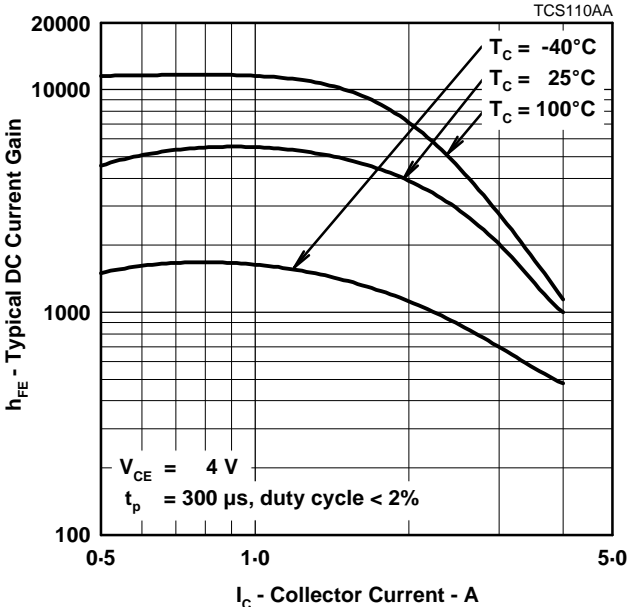


Figure 1.

COLLECTOR-EMITTER SATURATION VOLTAGE  
 VS  
 COLLECTOR CURRENT

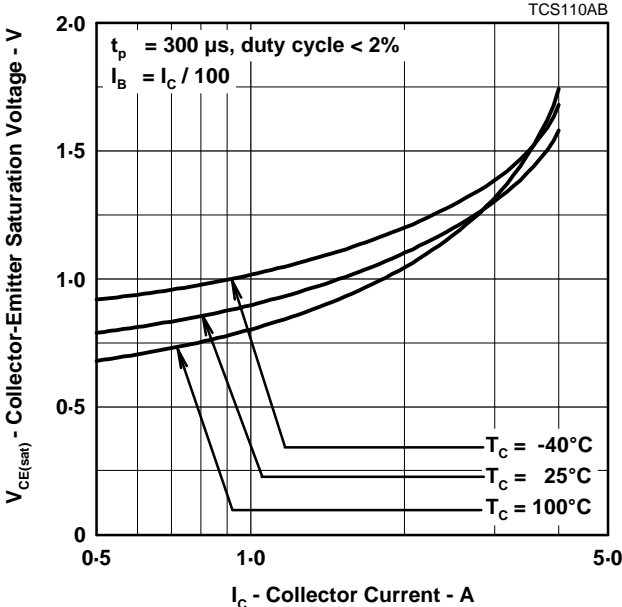


Figure 2.

BASE-EMITTER SATURATION VOLTAGE  
 VS  
 COLLECTOR CURRENT

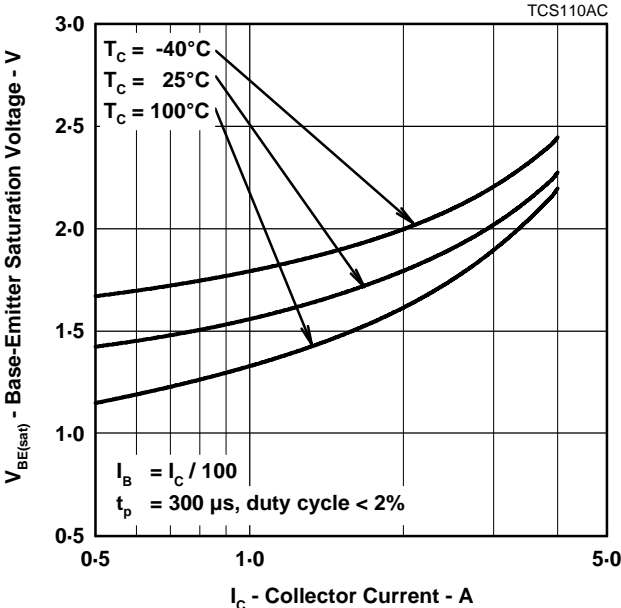


Figure 3.

# TIP110, TIP111, TIP112 NPN SILICON POWER DARLINGTONS

DECEMBER 1971 - REVISED MARCH 1997

## MAXIMUM SAFE OPERATING REGIONS

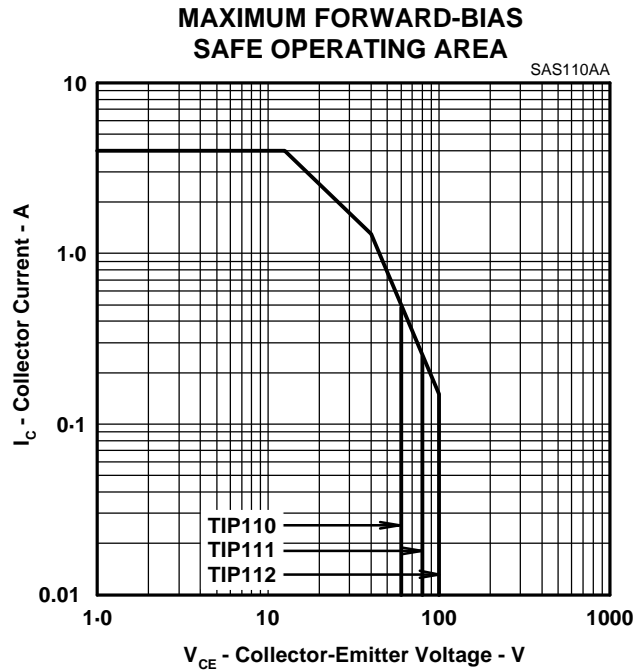


Figure 4.

## THERMAL INFORMATION

### MAXIMUM POWER DISSIPATION VS CASE TEMPERATURE

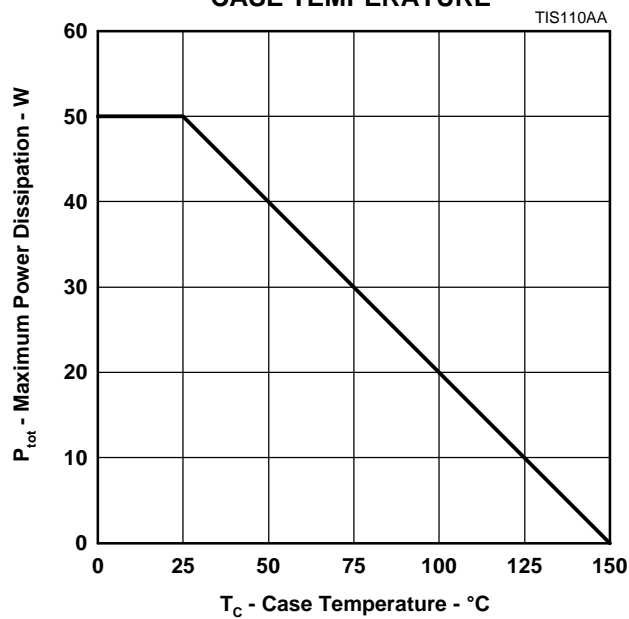


Figure 5.

# TIP110, TIP111, TIP112 NPN SILICON POWER DARLINGTONS

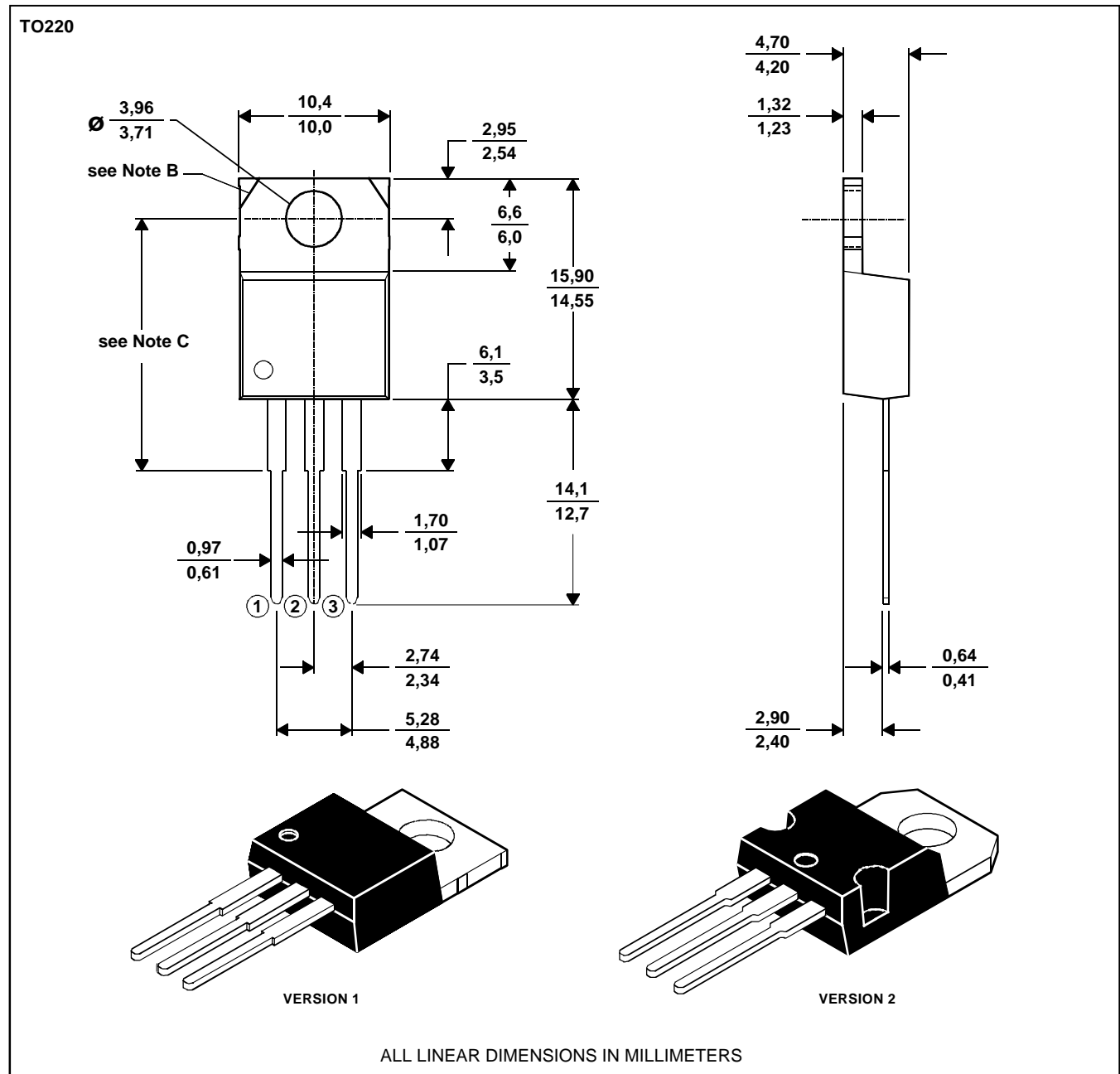
DECEMBER 1971 - REVISED MARCH 1997

## MECHANICAL DATA

### TO-220

#### 3-pin plastic flange-mount package

This single-in-line package consists of a circuit mounted on a lead frame and encapsulated within a plastic compound. The compound will withstand soldering temperature with no deformation, and circuit performance characteristics will remain stable when operated in high humidity conditions. Leads require no additional cleaning or processing when used in soldered assembly.



- NOTES: A. The centre pin is in electrical contact with the mounting tab.  
 B. Mounting tab corner profile according to package version.  
 C. Typical fixing hole centre stand off height according to package version.  
 Version 1, 18.0 mm. Version 2, 17.6 mm.

MDXXBE

## PRODUCT INFORMATION

# TIP110, TIP111, TIP112 NPN SILICON POWER DARLINGTONS

DECEMBER 1971 - REVISED MARCH 1997

---

## IMPORTANT NOTICE

Power Innovations Limited (PI) reserves the right to make changes to its products or to discontinue any semiconductor product or service without notice, and advises its customers to verify, before placing orders, that the information being relied on is current.

PI warrants performance of its semiconductor products to the specifications applicable at the time of sale in accordance with PI's standard warranty. Testing and other quality control techniques are utilized to the extent PI deems necessary to support this warranty. Specific testing of all parameters of each device is not necessarily performed, except as mandated by government requirements.

PI accepts no liability for applications assistance, customer product design, software performance, or infringement of patents or services described herein. Nor is any license, either express or implied, granted under any patent right, copyright, design right, or other intellectual property right of PI covering or relating to any combination, machine, or process in which such semiconductor products or services might be or are used.

PI SEMICONDUCTOR PRODUCTS ARE NOT DESIGNED, INTENDED, AUTHORIZED, OR WARRANTED TO BE SUITABLE FOR USE IN LIFE-SUPPORT APPLICATIONS, DEVICES OR SYSTEMS.

Copyright © 1997, Power Innovations Limited